



SHING LING®
星菱牌工業用縫紉機
INDUSTRIAL SEWING MACHINE



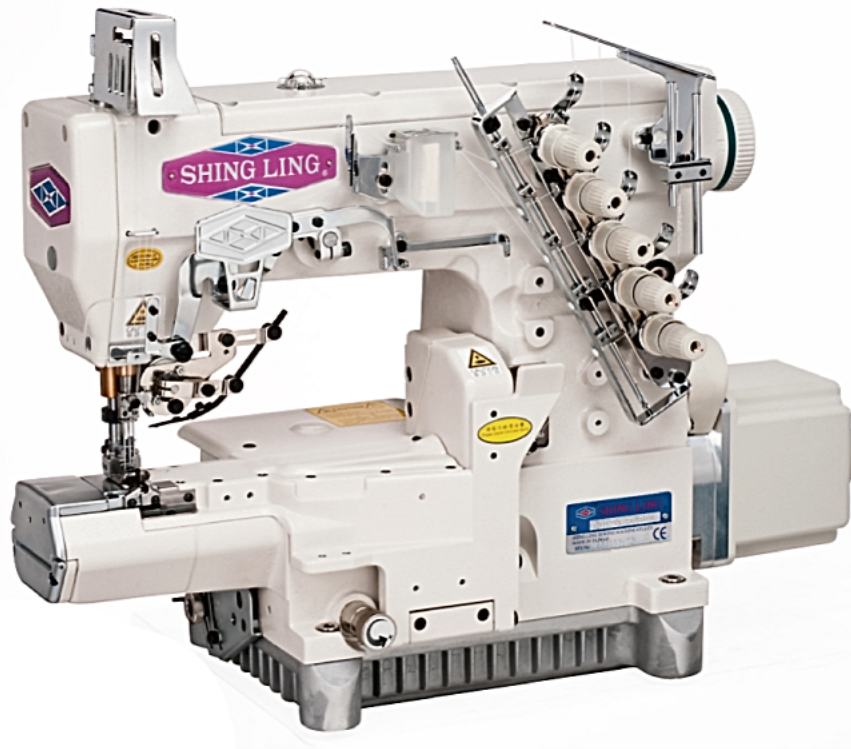
TAIWAN
EXCELLENCE 2012



VG-888A Series

橫筒型三針五線雙面飾綑縫機

3-needle 5-thread Cylinder-bed Interlock Machine with
Direct-drive Servo Motor (Electric or Pneumatic Type)



零件手冊
Spare Parts Book
ISO 9001/CNS 12681



VG-888-A

INDEX

索引

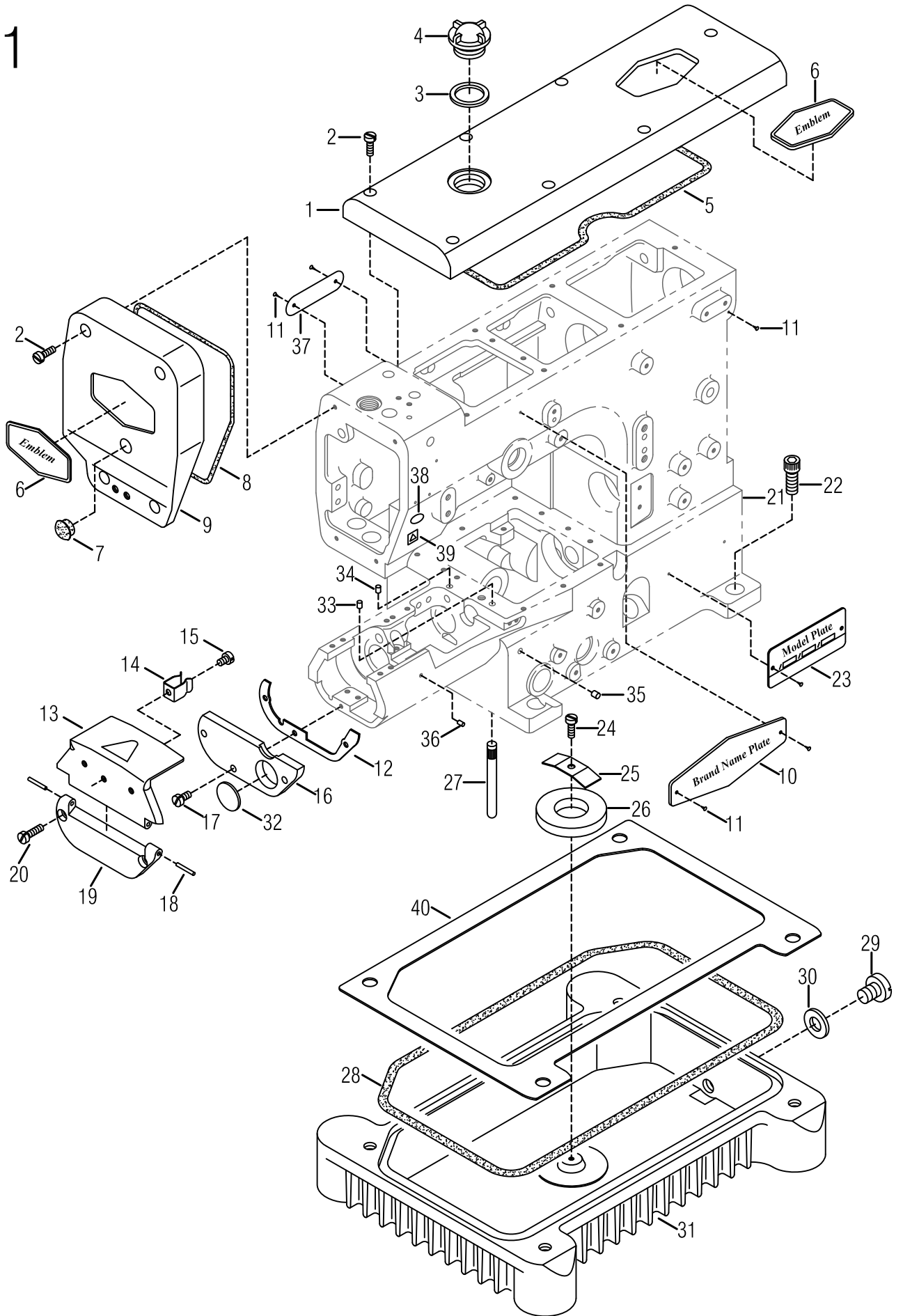
CONTENTS

MISCELLANEOUS COVERS (1)
MISCELLANEOUS COVERS (2)
MISCELLANEOUS THREAD EYELETS
MISCELLANEOUS BUSHINGS & EYE GUARD
MAIN SHAFT DRIVING MECHANISM
UPPER SHAFT & NEEDLE THREAD TAKE-UP MECHANISM
NEEDLE BAR MECHANISM
PRESSER FOOT MECHANISM
SPREADER MECHANISM
LOOPER DRIVING MECHANISM
FEED DRIVING CONTROL MECHANISM
FEED DRIVING MECHANISM & NEEDLE GUARD
LUBRICATING MECHANISM
ATTACHMENT FOR HEMMING & SEAM COVERING
TAPE BINDING DEVICE & ITS NEEDLE GAUGE
COMPACT-SIZE SERVO MOTOR & ATTACHMENT
*TABLE TOP INSTALLATION (TYPE B)
*TABLE TOP INSTALLATION (TYPE A : STANDARD)

目次

機殼及外蓋 (1)	1
機殼及外蓋 (2)	2
過線裝置及附件	3
套管裝置及護目鏡	4
下主軸傳動機構	5
上主軸及針線揚線機構	6
針棒機構	7
壓腳機構	8
上飾線勾針機構	9
下勾針驅動機構	10
頂針與送料驅動調整機構	11
頂針片及送料具驅動機構	12
機器給油迴油機構	13
專用配件	14
標準喇叭滾邊裝置	15
電子小馬達傳動機構	16
*一般桌板圖	
*特殊桌板圖	

1

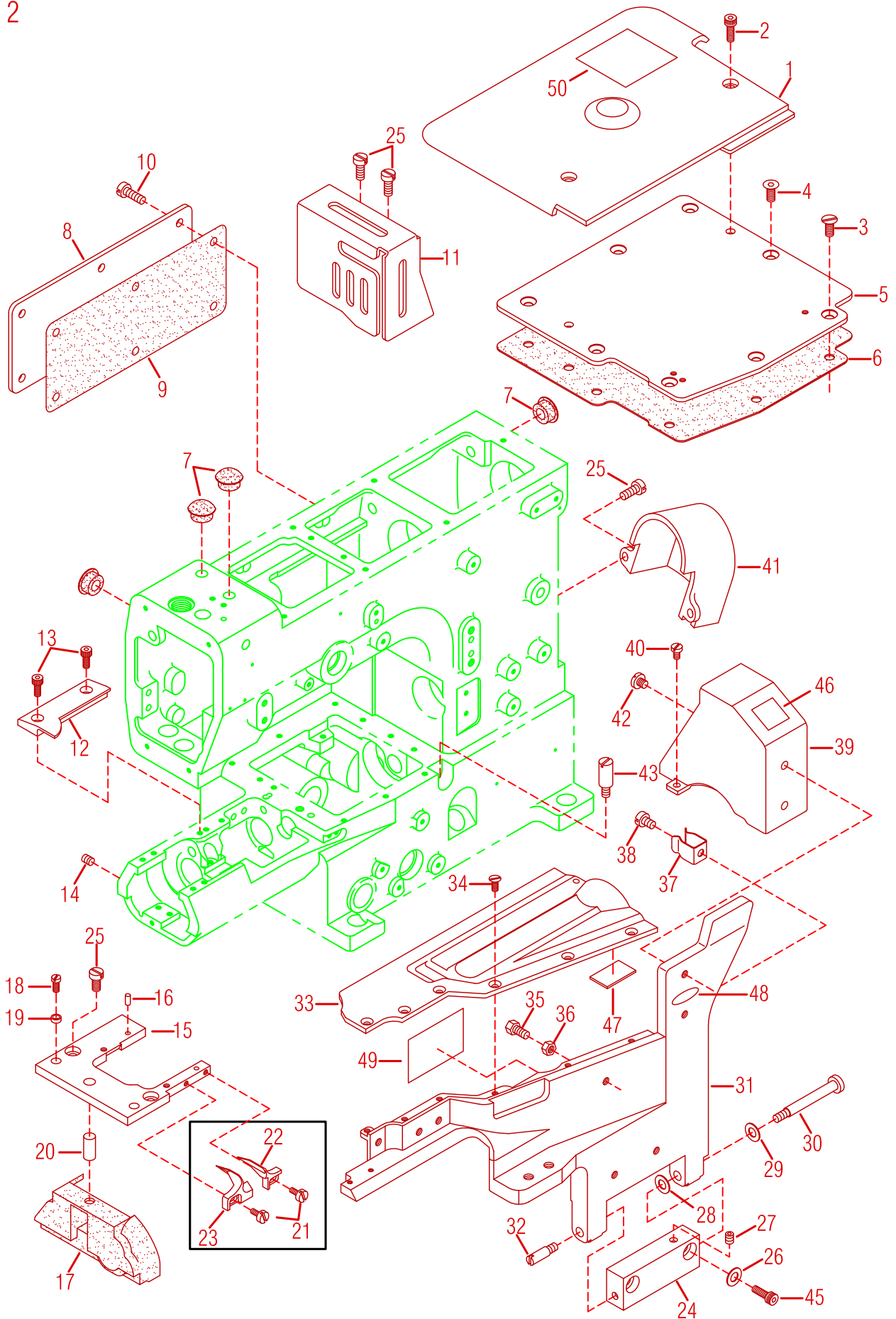


MISCELLANEOUS COVERS (1)

機殼及外蓋(1)

Ref. No.	Parts No.	Description	零件名稱	Amt. Req.
1	VA01	Top Cover	上蓋	1
2	SV241	Screw (M4 - 0.7 × 14)	螺絲	11
3	FA22	Oil Ring	上油鏡O型油環	1
4	FA21	Oil Sight Window	上油鏡	1
5	VA05-1	Top Cover Gasket	上蓋方形油環	1
6		Emblem	銘牌	2
7	RV09-1	Head Cover Seal Plug	膠塞	1
8	VA08-1	Head Cover Gasket	上側蓋菱形油環	1
9	VA09-2	Head Cover	上側蓋	1
10		Brand Name Plate	公司銘牌	1
11	FA11	Rivet (2 × 5)	鉚釘	6
12	VA12-1	Cylinder Side Cover Casket	圓筒下側蓋墊片	1
13	VA13	Cylinder Side Cover (Upper)	圓筒上側蓋	1
14	VA14	Cover Latch Spring	夾簧	1
15	SV220	Screw (M4 - 0.7 × 3.5)	螺絲	1
16	VA16	Cylinder Side Cover (Lower)	圓筒下側蓋	1
17	SV221	Screw (M4 - 0.7 × 8)	螺絲	1
18	VA18	Side Cover Hinge Pin	樞鈕插銷	2
19	VA19	Cylinder Side Cover Hinge	圓筒側蓋樞鈕	1
20	SV241	Screw (M4 - 0.7 × 14)	螺絲	2
21	VA21-1	Machine Frame Unit	機殼	1
22	SF251	Screw (M8 - 1.25 × 20)	螺絲	4
23		Model Plate (See the below)	型號銘牌	1
24	SV232	Screw (M4 - 0.7 × 10)	螺絲	1
25	VA26	Fixed plate	磁鐵固定壓板	1
26	VA27	Magnet Holder	磁鐵	1
27	VA28	Machine Frame Supporting Bar	機體腳樁	4
28	VA29-2	Oil Reservoir Gasket	油槽止油環	1
29	SF160-1	Screw (SM3 / 8 - 24 × 12.5)	螺絲	1
30	J0219	Oil Ring	O形油環	1
31	VA32	Oil Reservoir	油槽	1
32	VA16-1	Seal Plug	圓鋁塞片	1
33	VA20	Seal Plug	封塞	1
34	VA24	Seal Plug	封塞	1
35	VA33	Alumiumm Seal Plug	鋁封塞	1
36	VA34	Alumiumm Seal Plug	鋁封塞	1
37		Emblem	銘牌	1
38	VB42-4	Sticker(UY128)	貼紙(UY128)	1
39	VB42-1	Sticker	貼紙(敬請注意)	1
40	VA40	Oil Reservoir Gasket	油槽止油片	1

2



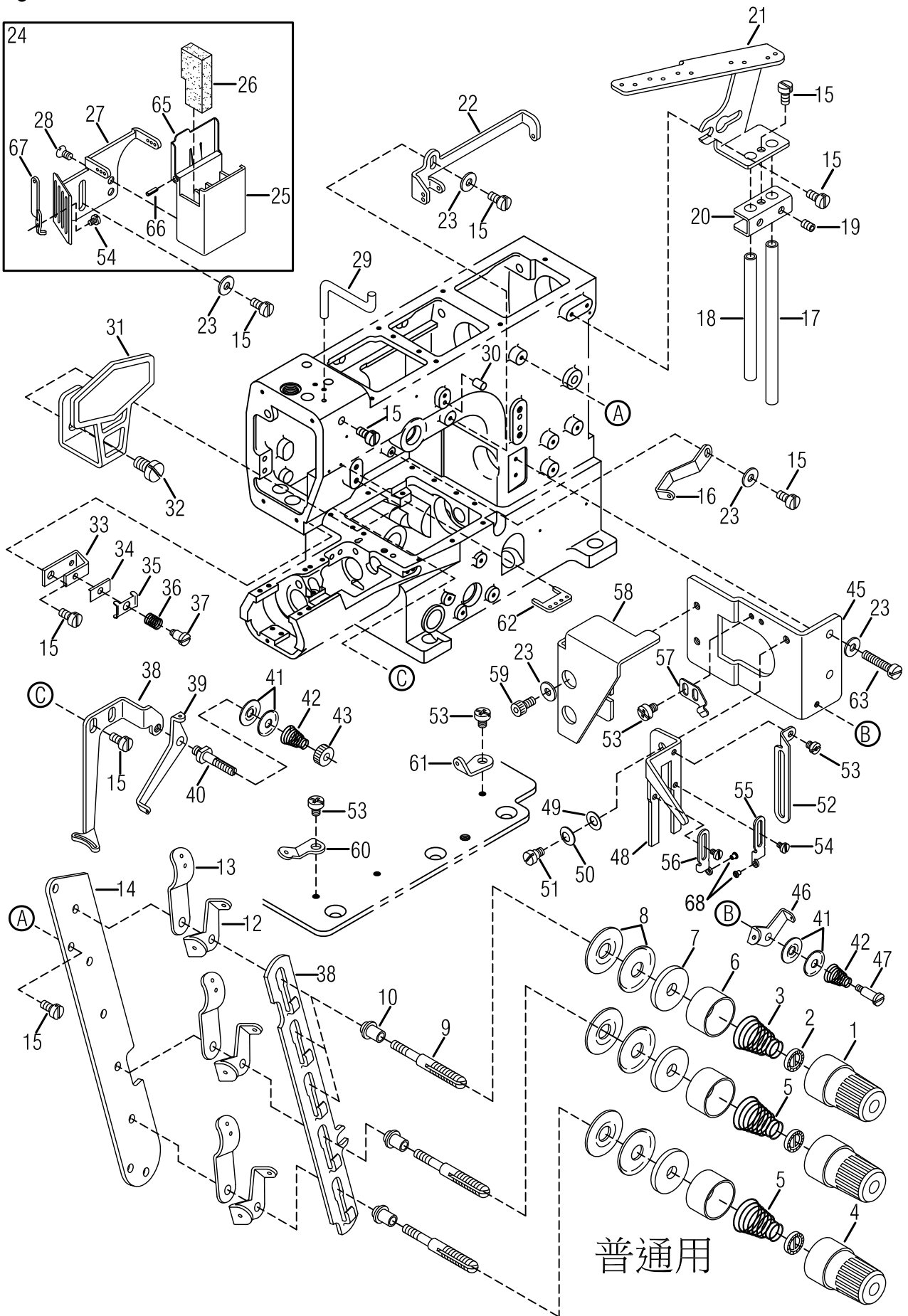
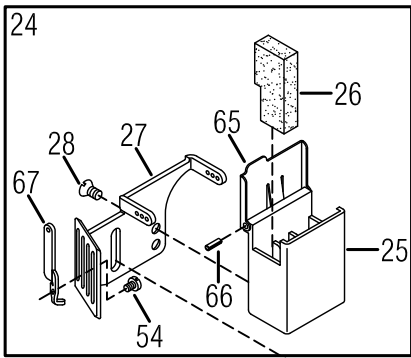
MISCELLANEOUS COVERS (2)

機殼及外蓋(2)

2

Ref. No.	Parts No.	Description	零件名稱	Amt. Req.
1	F0201	Cloth Plate (Large)	縫製平台	1
2	SF226	Screw (M4 - 0.7 × 12)	螺絲	2
3	SV224	Screw (M4 - 0.7 × 7)	螺絲	6
4	MFS080	Screw (M4 - 0.7 × 8)	螺絲	2
5	F0205	Crank Chamber Cover	曲軸室上蓋	1
6	F0206NBR	Crank Chamber Cover Gasket	曲軸室墊片	1
7	RV09-1	Seal Plug	膠塞	4
8	VB08	Rear Cover	後蓋	1
9	N0209	Rear Cover Gasket	後蓋墊片	1
10	SV232	Screw (M4 - 0.7 × 10)	螺絲	6
11	VB11	Needle Bar Guard	針柱護罩	1
12	VB12-3	Supplementary Slide Cover	滑件補助蓋	1
13	SF225	Screw (M4 - 0.7 × 10)	螺絲	2
14	SF240	Screw (M6 - 1.0 × 6)	螺絲	2
15	F0215-1	Stitch Plate Support	針板支架	1
16	VB16	Knock Pin	定出銷	2
17	VB17	Oil Defender	止油膠蓋	1
18	SV212	Screw (M3 - 0.5 × 6.5)	螺絲	2
19	VB19	Positioning Bushing	定位襯套	2
20	VB20	Knock Pin	固位銷	1
21	SF205	Screw (M2.6 - 0.45 × 5)	螺絲	2
22	VB22	Fabric Guide (Right)	導布器 (右)	1
23	VB23	Fabric Guide (Left)	導布器 (左)	1
24	GB41	Front Cover Hinge	前蓋鉸鏈	1
25	SV221	Screw (M4 - 0.7 × 8)	螺絲	6
26	VB28-0	Washer	墊片	2
27	SV227	Screw (M4 - 0.7 × 5)	螺絲	1
28	VB29	Conical Spring Washer	錐形彈簧墊圈	1
29	VB29-1	Conical Spring Washer	錐形彈簧墊圈	1
30	SV225	Screw (M4 - 0.7 × 8)	螺絲	1
31	F0231-1	Front Cover (Lower)	前蓋底座	1
32	SV226	Screw (M4 - 0.7 × 6)	螺絲	1
33	F0233-1	Front Cover (Upper)	前蓋頂座	1
34	SV211	Screw (M3 - 0.5 × 6)	螺絲	6
35	N0284	Screw (M4 - 0.7 × 8)	橡膠螺絲	1
36	NF27	Nut	螺帽	1
37	VA14	Cover Latch Spring	夾簧	1
38	MFL080	Screw (M4 - 0.7 × 8)	螺絲	1
39	F0239	Thread Take - up Cover (Front)	提線護蓋	1
40	SV215	Screw (M3 - 0.5 × 5)	螺絲	1
41	F0241	Shaft Sprocket Cover	齒輪護蓋	1
42	SV239-1	Screw (M4 - 0.7 × 8)	螺絲	2
43	GA22	Screw (M4 - 0.7 × 6)	螺絲	1
44				
45	SV231	Screw (M4 - 0.7 × 18)	螺絲	2
46	VB42-1	Sticker	貼紙 (敬請注意)	1
47	VB42-5	Sticker	貼紙 (海棉貼紙)	1
48	VB42-6	Sticker	貼紙 (請每日檢查油量)	1
49	VB42-7	Sticker	貼紙 (穿線圖)	1
50	VB42-9	Sticker	貼紙 (注意)	1

3



普通用

MISCELLANEOUS THREAD EYELETS

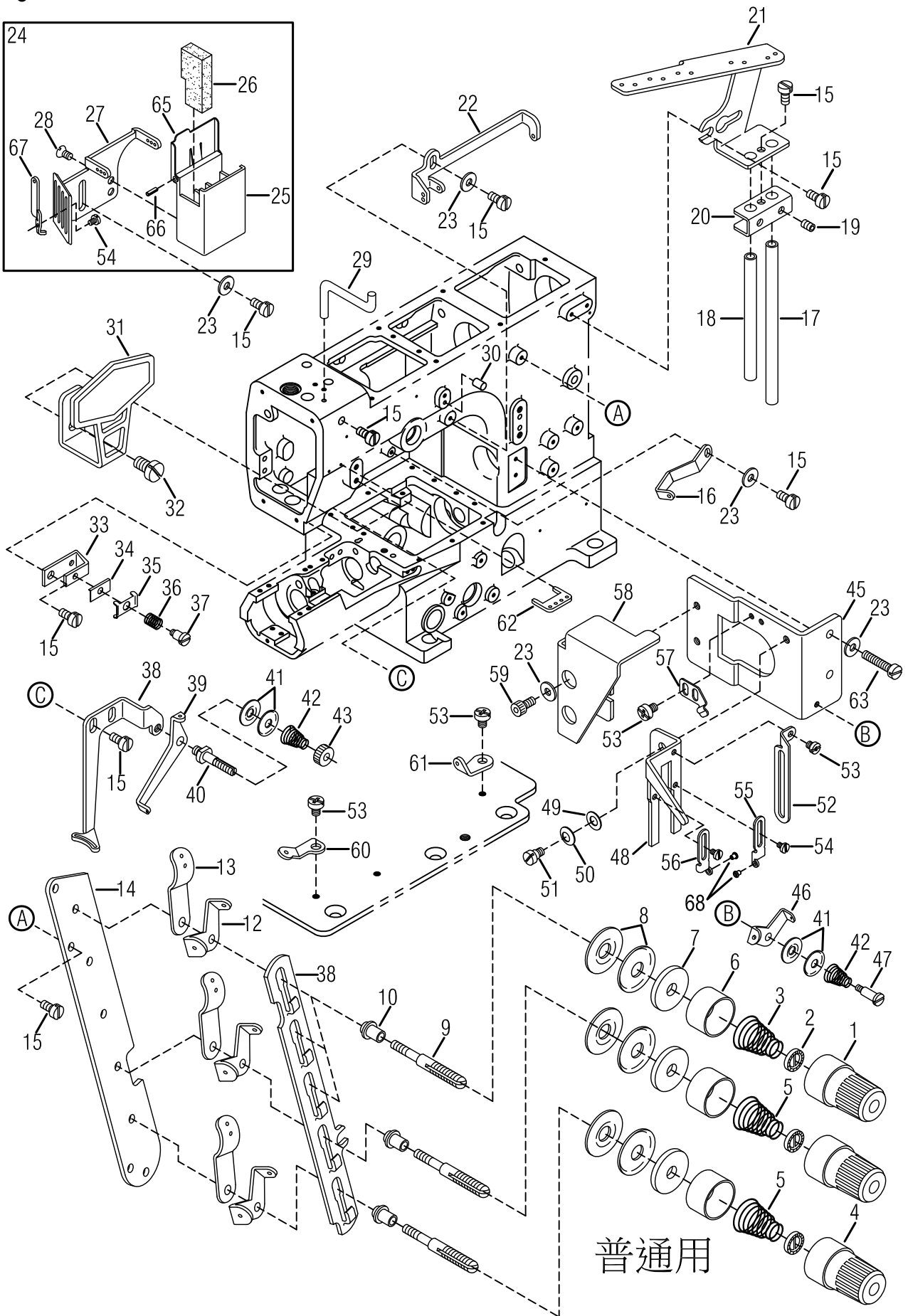
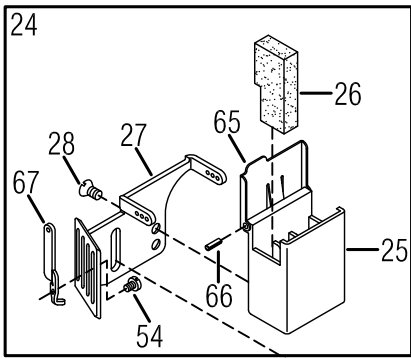
過線裝置及附件

3

Ref. No.	Parts No.	Description	零件名稱	Amt. Req.
1	FK20-1	Thread Tension Spring Cap (B)	上線張力調整鈕 (藍)	3
2	FK19	Tension Spring Disc Support	張力調整圓盤	5
3	VC03	Needle Thread Tension Spring	針線張力彈簧	3
4	FK20	Thread Tension Spring Cap (R)	上線張力調整鈕 (紅)	2
5	VC05	Top Cover Thread Tension Spring	上線張力彈簧	2
6	FJ21	Thread Tension Spring Retainer	上線張力彈簧固定座	5
7	FK12-1	Felt	氈墊	5
8	FK14	Tension Disc	張力過線盤(大)	10
9	VC09-1	Tension Post	上線張力彈簧支柱	5
10	VC10	Tension Post Ferrule	上線張力支柱隔環	5
11	VC11	Tension Disc Separator (5 Threads)	上線張力圓盤鬆線滑板	1
12	VC12	Tension Disc Eyelet	上飾線過線板	5
13	VC13	Thread Lead - in Guide	過線導片	5
14	VC14	Tension Post Support (5 Threads)	上線張力組支柱座	1
15	SV221	Screw (M4 - 0.7 × 8)	螺絲	13
16	VC16	Top Cover Thread Eyelet (Left)	上飾線導線桿(左)	1
17	VC17	Thread Eyelet Pipe (Long)	過線導管(長)	1
18	VC18	Thread Eyelet Pipe (Short)	過線導管(短)	1
19	SV227	Screw (M4 - 0.7 × 5)	螺絲	2
20	VC20	Thread Eyelet Pipe Stay	過線導管固定座	1
21	VC21	Thread Guide Plate (5 Threads)	過線導板	1
22	VC22	Top Cover Thread Eyelet (Right)	上飾線過線桿(右)	1
23	WF04	Washer	墊片	7
24	F0324	SP Device , Complete Set	矽油盒組	1
25	VC25	SP Cover	矽油槽	1
26	VC26	Felt	氈墊	1
27	F0327	Needle Thread Eyelet	導線過線架	1
28	SF111	Screw (SM9 / 64 - 40 × 6.7)	螺絲	2
29	VC29-1	Needle Thread Guide	針線導架	1
30	VC30	Guide Pin	固定插銷	1
31	VC31-2	Needle Thread Eyelet	揚線臂護線罩	1
32	SV262	Screw (M6 - 1.0 × 10)	螺絲	1
33	VC33	Needle Thread Retainer Support	針線張力調整組固定座(小)	1
34	VC34	Thread Retainer Disc Support	針線張力導板	1
35	VC35	Needle Thread Retainer Disc	針線張力調整組壓板(小)	1
36	VC36	Needle Thread Retainer Spring	針線張力彈簧	1
37	SV108-1	Screw (SM1 / 8 - 44 × 5.3)	螺絲	1
38	VC38	Top Cover Thread Guide	上飾線導板	1
39	VC39	Supplementary Thread Guide	上飾線輔助導板	1
40	VC40	Tension Post	上飾線張力調整組支柱	1

※ Ref. No. 41 to 68 See the following page.

3



普通用

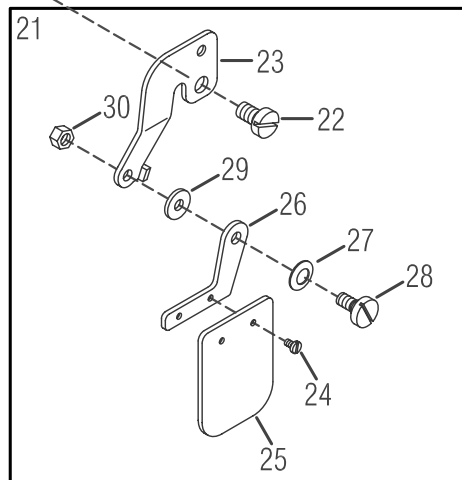
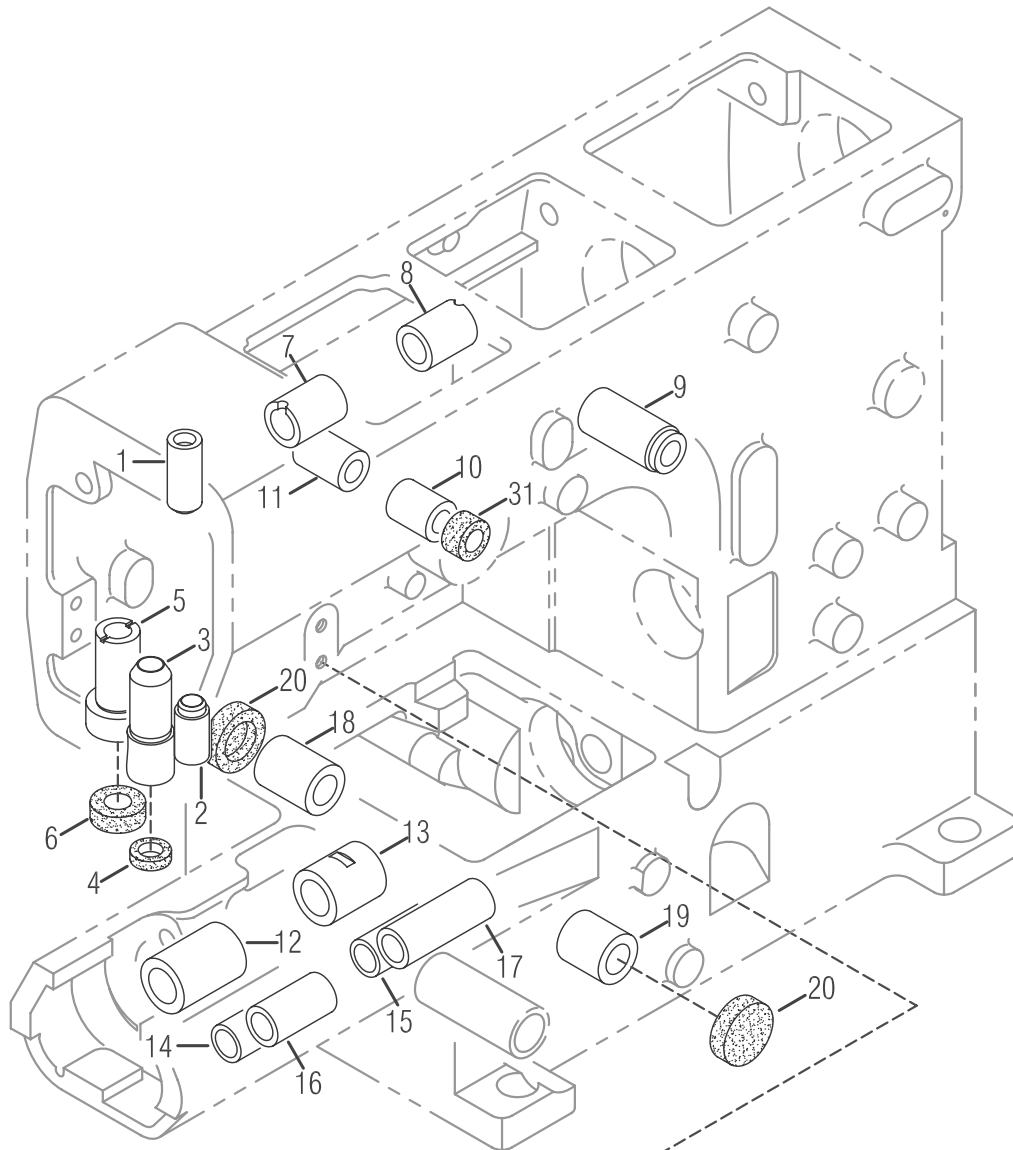
MISCELLANEOUS THREAD EYELETS

過線裝置及附件

3

Ref. No.	Parts No.	Description	零件名稱	Amt. Req.
41	FC24	Top Cover Tension Disc(Small)	上飾線過線盤(小)	4
42	VC42	Supplementary Tension Spring	彈簧	2
43	VC43	Nut	螺帽	1
44				
45	VC45	Thread Take-up Eyelet Bracket	提線組托架	1
46	VC46	Looper Thread Eyelet	下勾針過線板	1
47	SV218	Screw (M3 - 0.5 × 4.5)	螺絲	1
48	VC49-1	Thread Take-up Eyelet Holder	提線托板	1
49	VB29	Conical Spring Washer	錐形彈簧墊片	1
50	VB29-1	Conical Spring Washer	錐形彈簧墊片	1
51	N0344	Screw (M4 - 0.7 × 6.5)	螺絲	1
52	VC53-1	Looper Thread Guide	下飾線托線板	1
53	SV210	Screw (M3 - 0.5 × 4)	螺絲	4
54	SV206	Screw (M2.5 - 0.45 × 3.5)	螺絲	5
55	VC55-1	Thread Take - up Eyelet (Right)	調線板 (右)	1
56	VC57-1	Thread Take - up Eyelet (Left)	調線板 (左)	1
57	VC58	Latch Spring	鎖門彈簧	1
58	VC59-3	Thread Take - up Cover (Rear)	提線護蓋 (後)	1
59	SF224	Screw (M4 - 0.7 × 8)	螺絲	2
60	F0360	Looper Thread Eyelet (Center)	下飾線過線板 (中)	1
61	VC62	Looper Thread Eyelet (Right)	下飾線過線板 (右)	1
62	FA10-4	Needle Thread Eyelet	針線過線板	1
63	SF221	Screw (M4 - 0.7 × 20)	螺絲	2
64				
65	VC25-1	Sp Container Cover	儲油槽蓋	1
66	PF10-1	Pin	空心銷	2
67	F0367	Thread Eyelet Support	導線支柱	3
68	J0865-2	Ceramic	陶瓷	2

※ Ref. No. 1 to 40 See the preceding page.



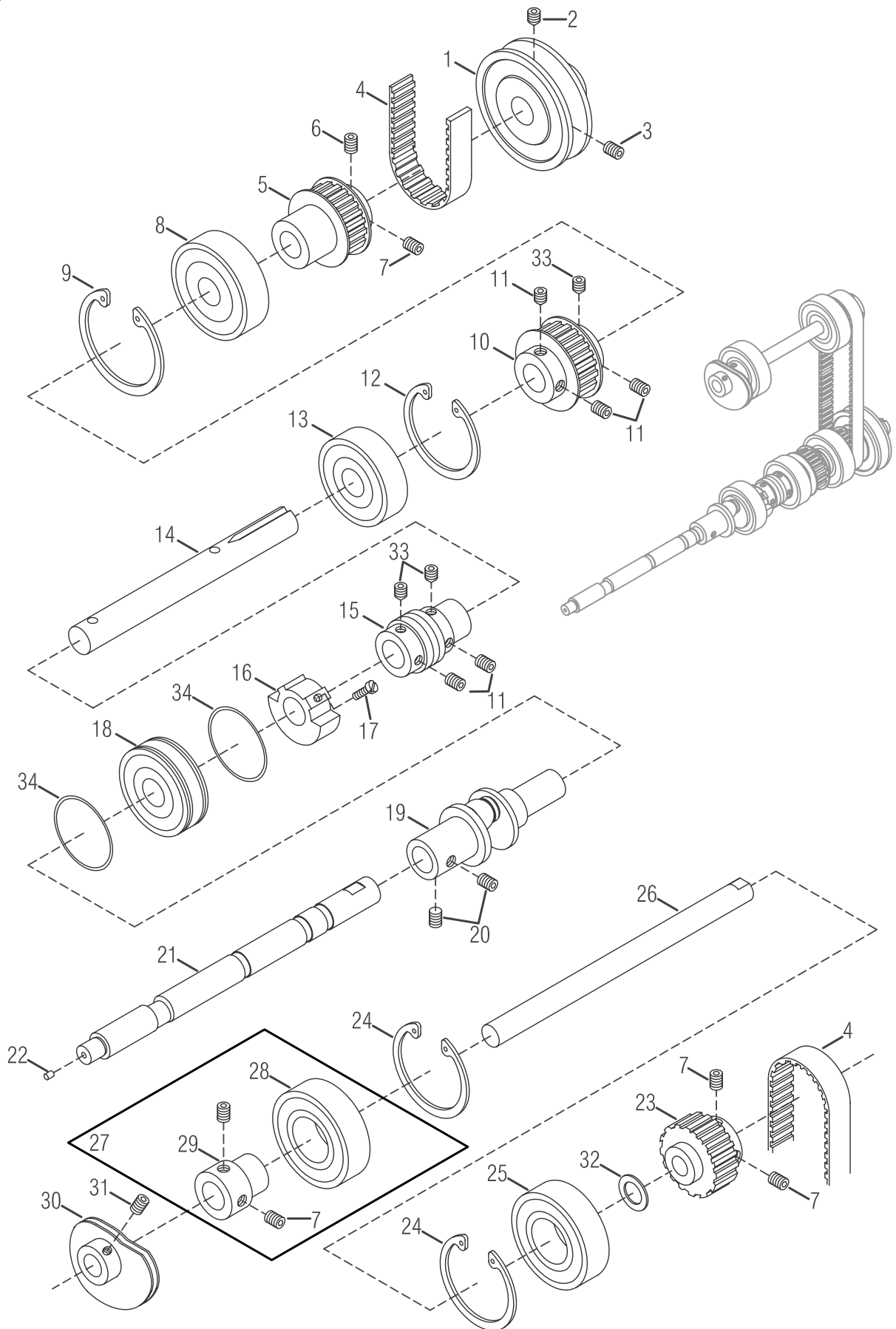
MISCELLANEOUS BUSHINGS & EYE GUARD

套管裝置及護目鏡

4

Ref. No.	Parts No.	Description	零件名稱	Amt. Req.
1	VD01-1	Needle Bar Bushing (Upper)	針柱套管(上)	1
2	VD02-1	Needle Bar Bushing (Lower)	針柱套管(下)	1
3	VD03	Persser Bar Bushing	壓腳套管	1
4	VD04	Oil Seal	止油環	1
5	VD05	Spreader Driving Bar Bushing	上飾線結線套管	1
6	VD06	Oil Seal	止油環	1
7	VD07-1	Spreader Driving Shaft Bushing (Left)	上飾線結線器傳動軸套管(左)	1
8	VD08-1	Spreader Driving Shaft Bushing (Right)	上飾線結線器傳動軸套管(右)	1
9	VD09-1	Foot Lifter Lever Bushing	抬壓腳連桿套管	1
10	VD10-1	Needle Thread Take - up Bushing (Front)	針線揚線桿套管(前)	1
11	VD11-1	Needle Thread Take - up Bushing (Rear)	針線揚線桿套管(後)	1
12	VD12-1	Lower Shaft Bushing (Left)	下傳動軸套管(左)	1
13	VD13-1	Lower Shaft Bushing (Right)	下傳動軸套管(右)	1
14	VD14-1	Differential Feed Bar Shaft Bushing (Left)	差動送料具傳動軸套管(左)	1
15	VD15-1	Differential Feed Bar Shaft Bushing (Right)	差動送料具傳動軸套管(右)	1
16	VD16-1	Feed Bar Lift Shaft Bushing (Left)	送料具傳動軸套管(左)	1
17	VD17-2	Feed Bar Lift Shaft Bushing (Right)	送料具傳動軸套管(右)	1
18	VD20-1	Looper Driving Shaft Bushing (Rear)	下勾針傳動軸套管(後)	1
19	VD19-1	Looper Driving Shaft Bushing (Front)	下勾針傳動軸套管(前)	1
20	VD21	Seal Plug	止油封塞	2
21	VD22	Eye Guard , Complere Set	護目鏡組	1
22	SV262	Screw (M6 - 1.0 × 10)	螺絲	1
23	VD23	Eye Guard Bracket	護目鏡固定座	1
24	SV104	Screw (SM3 / 32 - 56 × 5)	螺絲	2
25	VD25	Eye Guard	護目鏡片	1
26	VD27-1	Eye Guard Holder	護目鏡支架	1
27	FA26	Conical Spring Washer	錐形彈簧墊片	1
28	SV126	Screw (SM11 / 64 - 40 × 2.5)	螺絲	1
29	FA24	Washer	墊片	1
30	NF12	Nut	螺帽	1
31	VD32	Oil Seal	止油環	1

5

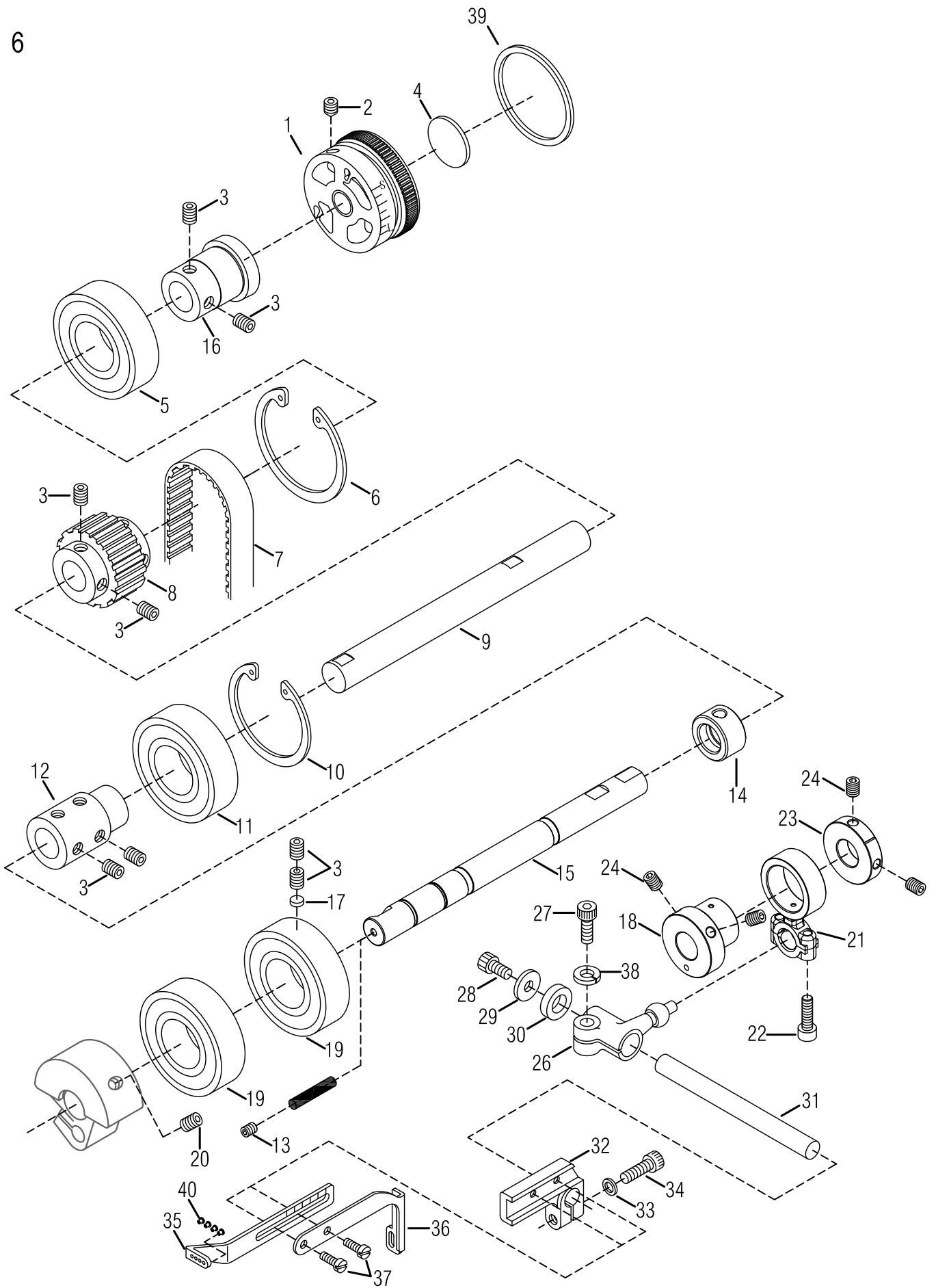


MAIN SHAFT DRIVING MECHANISM

下主軸傳動機構

Ref. No.	Parts No.	Description	零件名稱	Amt. Req.
1	VE01	Pulley	皮帶輪	1
2	SV261	Screw (M6 - 1.0 × 8)	螺絲 (尖)	1
3	SV264	Screw (M6 - 1.0 × 8)	螺絲	1
4	VE04-1	Timing Belt	齒形皮帶	1
5	G0505-1	Shaft Sprocket (Lower)	齒形皮帶輪	1
6	SV257	Screw (M5 - 0.8 × 7)	螺絲	1
7	SV250	Screw (M5 - 0.8 × 5)	螺絲	5
8	VE06	Ball Bearing (Right)	滾珠培林 (右)	1
9	VE07	Retaining Ring	扣環	1
10	K0407-2	Main Shaft Sprocket (Lower)	下主軸齒形輪	1
11	SF240	Screw (M6 - 1.0 × 6)	螺絲	5
12	VE09	Retaining Ring	扣環	1
13	VE10	Ball Bearing (Middle)	滾珠培林 (中)	1
14	VE11	Lower Shaft (Right)	下傳動軸 (右)	1
15	VE12	Oil Pump Driving Worm	油泵傳動螺桿	1
16	VE13	Counterweight (Small)	平衡配重凸輪	1
17	SV221	Screw (M4 - 0.7 × 8)	螺絲	2
18	GE11-6	Ball Bearing (Left)	滾珠培林 (左)	1
19	VE16	Lower Crank shaft	下曲軸	1
20	SV260	Screw (M6 - 1.0 × 5)	螺絲	2
21	VE18-4	Lower Shaft (Left)	下傳動軸 (左)	1
22	VE19	Seal Plug	止油封塞	1
23	G0542-5	Thread Take - up Shaft Sprocket (Upper)	上提線齒形輪	1
24	VE21	Retaining Ring	扣環	2
25	VE22	Ball Bearing	滾珠培林	1
26	F0526-1	Looper Thread Take - up Shaft	下勾針提線主軸	1
27	VE25	Adapter (Left), C . Set	軸環組 (左)	1
28	VE26LU	Ball Bearing	滾珠培林	1
29	VE27	Collar	軸套	1
30	F0530	Looper Thread Take - up	下勾針提線輪	1
31	SF142	Screw (SM7 / 32 - 32 × 4)	螺絲	2
32	F1043	Washer	墊片	1
33	SV271	Screw (M6 - 1.0 × 6)	螺絲 (尖)	3
34	GE59	Oil Seal	O型環	2

6

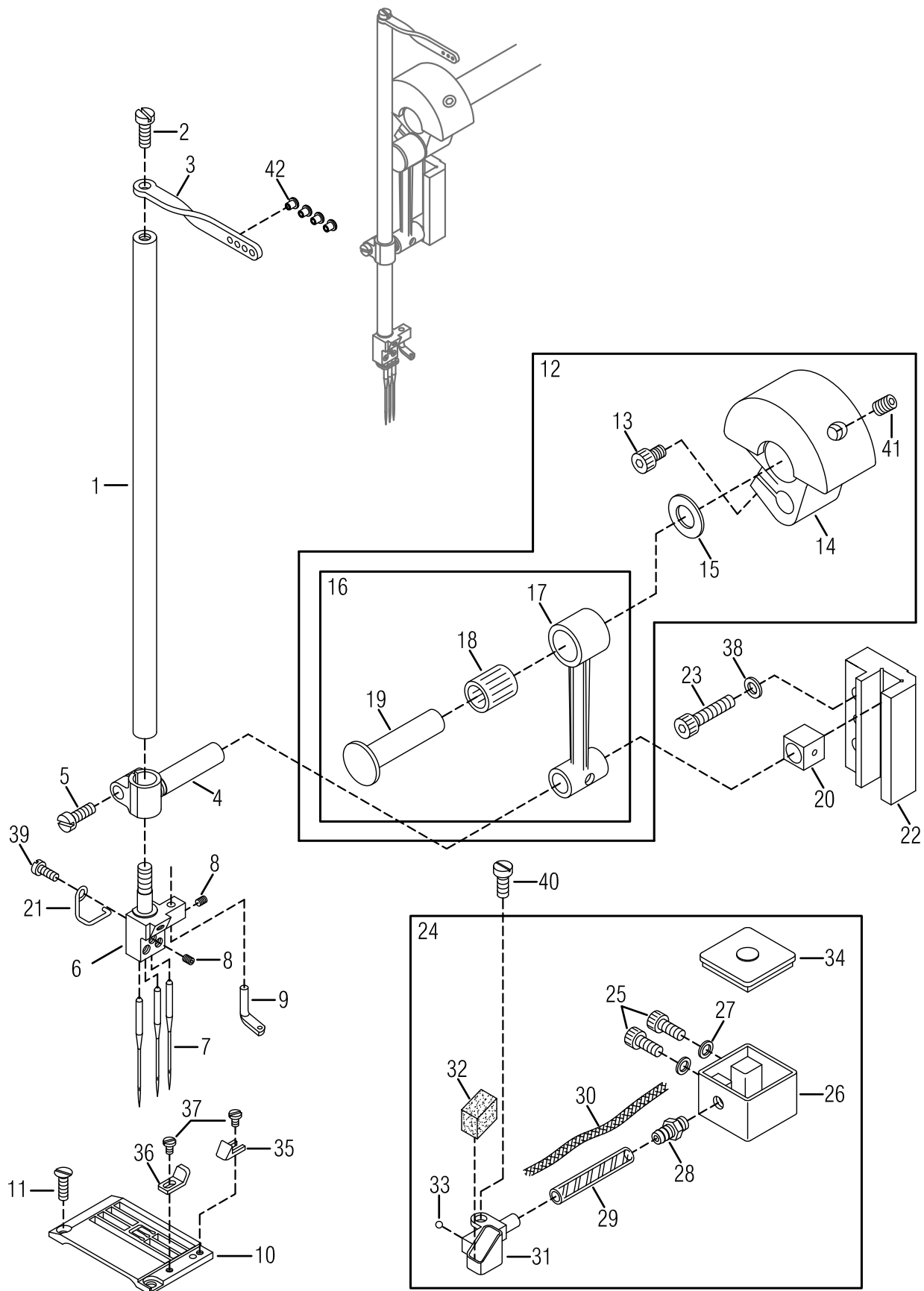


UPPER SHAFT & NEEDLE THREAD TAKE-UP MECHANISM

上主軸及針線揚線機構

6

Ref. No.	Parts No.	Description	零件名稱	Amt. Req.
1	G0601-2	Handwheel	手推輪	1
2	SF241	Screw (M6 - 1.0 × 10)	螺絲	2
3	SF240	Screw (M6 - 1.0 × 6)	螺絲	12
4	VF04-2	Handwheel Mark	手推輪商標銘牌	1
5	VE06	Ball Bearing	滾珠培林	1
6	VE07	Retaining Ring	扣環	1
7	GF07	Timing Belt	同步傳動齒形皮帶	1
8	GF08	Upper Shaft Sprocket (Upper)	上主軸齒形輪 (上)	1
9	VF09-2	Upper Shaft	上主軸傳動軸	1
10	VE09	Retaining Ring	扣環	1
11	VE10	Ball Bearing	滾珠培林	1
12	VF12	Upper Shaft Joint	上主軸接頭	1
13	MEA050	Screw (M3.5 - 0.6 × 5)	螺絲	1
14	N0616	Oil Sleeve	聚油套環	1
15	N0617-2	Upper Crank Shaft	上曲軸	1
16	VF05-2	Adapter	軸套管	1
17	VF17	Rubber Seat	減震墊	1
18	N0621	Eccentric Thread Take - up	揚線偏心輪	1
19	VF19	Ball Bearing	滾珠培林	2
20	SV275	Screw (M8 - 1.25 × 16)	螺絲	2
21	N0636-1	Connecting Rod	萬向連桿	1
22	SV223	Screw (M4 - 0.7 × 14)	螺絲	2
23	N0622	Collar	定位環	1
24	SV264	Screw (M6 - 1 × 8)	螺絲	4
25				
26	VF26-2	Guide Fork	傳動桿	1
27	SV268	Screw (M6 - 1.0 × 16)	螺絲	1
28	SV252	Screw (M5 - 0.8 × 10)	螺絲	1
29	VF29	Washer	墊片	1
30	VF30	Spacer	襯套	1
31	VF31-1	Driving Shaft	傳動軸	1
32	VF32	Bracket	托架	1
33	SW06	Spring Washer	彈簧墊片	1
34	SV253	Screw (M5 - 0.8 × 16)	螺絲	1
35	VF35-2	Needle Thread Take - up (5 Threads)	針線揚線桿	1
36	VF36	Top Cover Thread Take - up	上飾線揚線桿	1
37	SV310	Screw (M3.5 - 0.6 × 8)	螺絲	2
38	15-39	Spring Washer	彈簧墊片	1
39	F0639-1	Color Ring (Green - 328C)	色環 (綠色)	1
40	J0865-2	Ceramic	陶瓷	4



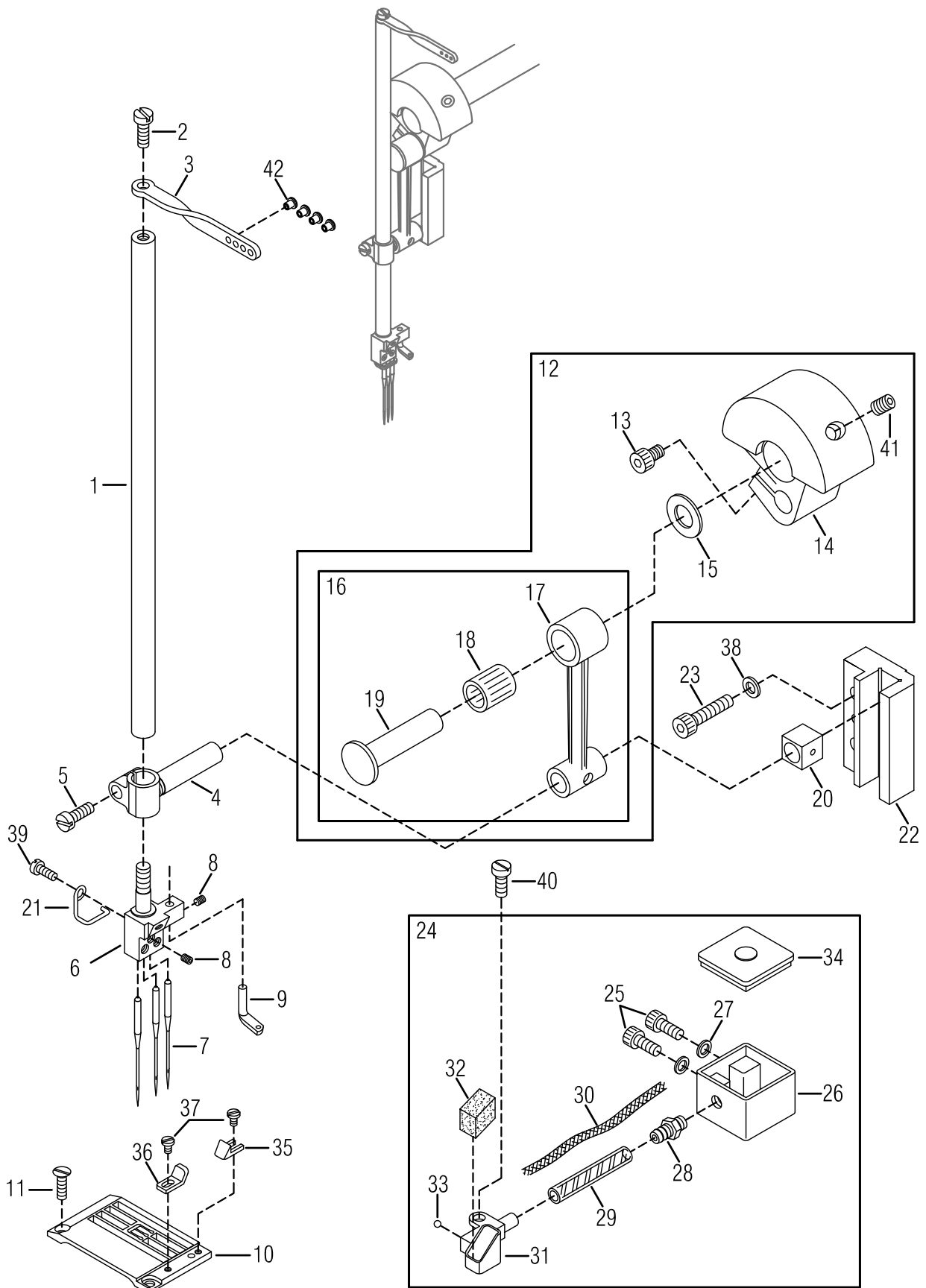
NEEDLE BAR MECHANISM

針棒機構

7

Ref. No.	Parts No.	Description	零件名稱	Amt. Req.
1	VG01-1	Needle Bar	針柱	1
2	SF114	Screw (SM9 / 64 - 40 × 7.5)	螺絲	1
3	VG03-2	Needle Bar Thread Eyelet (5 Threads)	針柱頂線過線桿	1
4	F0704-2	Needle Bar Bracket	針柱驅動架	1
5	SV232	Screw (M4 - 0.7 × 10)	螺絲	1
6-1	VG240-2	Needle Clamp (240)(Optional)	(選購)針鉤 (2針 4.0 L)	
6-2	VG248-2	Needle Clamp (248)(Optional)	(選購)針鉤 (2針 4.8 L)	
6-3	VG356-2	Needle Clamp (356)(Optional)	(選購)針鉤 (3針 5.6 L)	
6-4	VG360	Needle Clamp (360)(Optional)	(選購)針鉤 (3針 6.0 L)	1
6-5	VG364-2	Needle Clamp (364)(Optional)	(選購)針鉤 (3針 6.4 L)	
6-6	VG460-1	Needle Clamp (460)(Optional)	(選購)針鉤 (4針 6.0 L)	
6-7	VG464-3	Needle Clamp (464)(Optional)	(選購)針鉤 (4針 6.4 L)	
7	UY128GAS-11	Needle (240、248、356、364、464) (Optional)	針(選購)	3
	MY1014B	Needle (452、460) (Optional)	針(選購)	4
8	SF106	Screw (SM1 / 8 - 44 × 2.7)	螺絲	4
9	FC38	Top Cover Thread Eyelet	上飾線過線桿	1
10-1	VG40212	Stitch Plate (240)(Optional)	(選購)針板 (240)(梯型)(4溝)	1
10-2	VG402TN1	Stitch Plate (240)(Optional)	(選購)針板 (240)(梯型)(4溝)(薄料)	
10-3	VG48212	Stitch Plate (248)(Optional)	(選購)針板 (248)(梯型)(4溝)	
10-4	VG482TN1	Stitch Plate (248)(Optional)	(選購)針板 (248)(梯型)(4溝)(薄料)	
10-5	VG56312	Stitch Plate (356)(Optional)	(選購)針板 (356)(梯型)(4溝)	
10-6	VG5631133	Stitch Plate (356)(Optional)	(選購)針板 (356)(梯型)(4溝)(齒溝窄)	1
10-7	VG56311CT	Stitch Plate (356)(Optional)(Yarn Thread)	(選購)針板 (356)(梯型)(4溝)(高士線)	
10-8	VG60311	Stitch Plate (360)(Optional)	(選購)針板 (360)(梯型)(4溝)	
10-9	VG64312	Stitch Plate (364)(Optional)	(選購)針板 (364)(梯型)(4溝)	
10-10	VG6431133	Stitch Plate (364)(Optional)	(選購)針板 (364)(梯型)(4溝)(齒溝窄)	
10-11	VG60411	Stitch Plate (460)(Optional)	(選購)針板 (460)(梯型)(4溝)	
10-12	VG64411	Stitch Plate (464)(Optional)	(選購)針板 (464)(梯型)(4溝)	
11	SV215	Screw (M3 - 0.5 × 5)	螺絲	2
12	F0712	Counterweight , Complete Set	平衡配重凸輪組	1
13	SV252-1	Screw (M5 - 0.8 × 10)	螺絲	1
14	VG14-2	Counterweight	平衡配重凸輪	1
15	VG16	Connecting Rod Ring	連桿襯墊	1
16	F0716	Connecting Rod , Complete Set	連桿組	1
17	F0717	Connecting Rod	連桿	1
18	VG19	Roller Bearing	培林	1
19	VG20	Connecting Rod Pin	連桿插銷	1
20	VG22	Slide Block	針柱定位滑塊	1
21	VG21-2	Eyelet Spring	針鉤固定線	1
22	F0722	Needle Bar Guide	針柱定位導槽	1
23	SV247	Screw (M4 - 0.7 × 20)	螺絲	2
24	VG25	HR Device , Complete Set	擊針冷卻系統組	1
25	SF225	Screw (M4 - 0.7 × 10)	螺絲	2
26	VG26	HR Container	矽油盒	1
27	SW03	Spring Washer	彈簧墊片	2
28	VG28	Pipe Joint	接合管	1
29	VG29	Oil Tube	油管	1
30	VG30	Felt	油線	1

※ Ref. No. 31 to 41 See the following page.

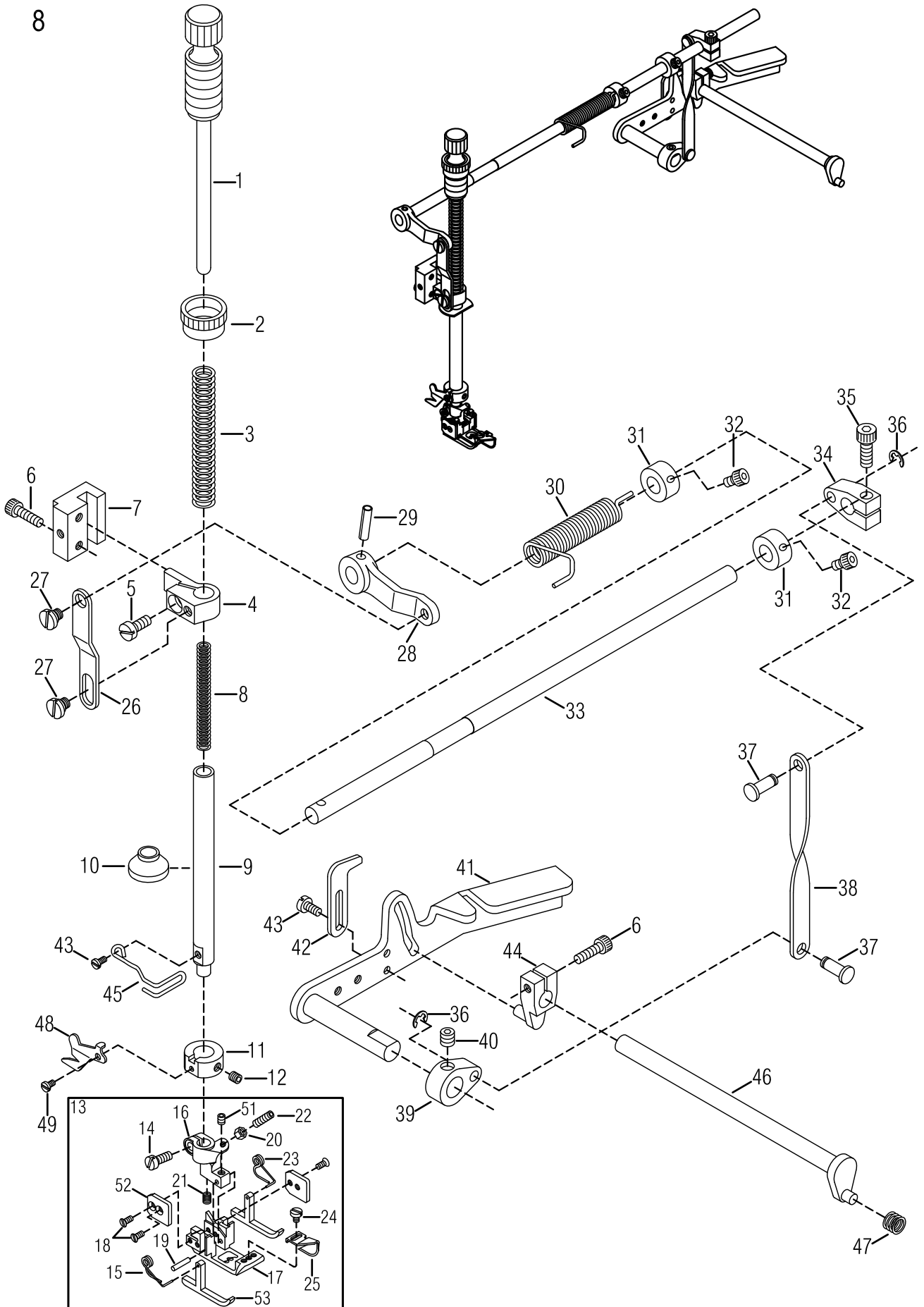


NEEDLE BAR MECHANISM

NEEDLE BAR MECHANISM			針棒機構	7
Ref. No.	Parts No.	Description	零件名稱	Amt. Req.
31	VG31	HR Cup	擊針冷卻杯	1
32	VG32	HR Felt	吸油氈	1
33	VG33	Seal Plug	止油珠塞	1
34	VG34	HR Cup Cap	矽油杯蓋	1
35	VG35	Fabric Guide (Right)	布導器 (右)	1
36	VG36	Fabric Guide (Left)	布導器 (左)	1
37	SV102	Screw (SM3 / 32 - 56 × 3.5)	螺絲	2
38	WF03	Washer	墊片	2
39	SF205	Screw (M2.6 - 0.4 × 5)	螺絲	1
40	SV221	Screw (M4 - 0.7 × 8)	螺絲	1
41	SV275	Screw (M8 - 1.25 × 16)	螺絲	2
42	J0865-2	Ceramic	陶瓷	4

※ Ref. No. 1 to 30 See the preceding page.

8



PRESSER FOOT MECHANISM

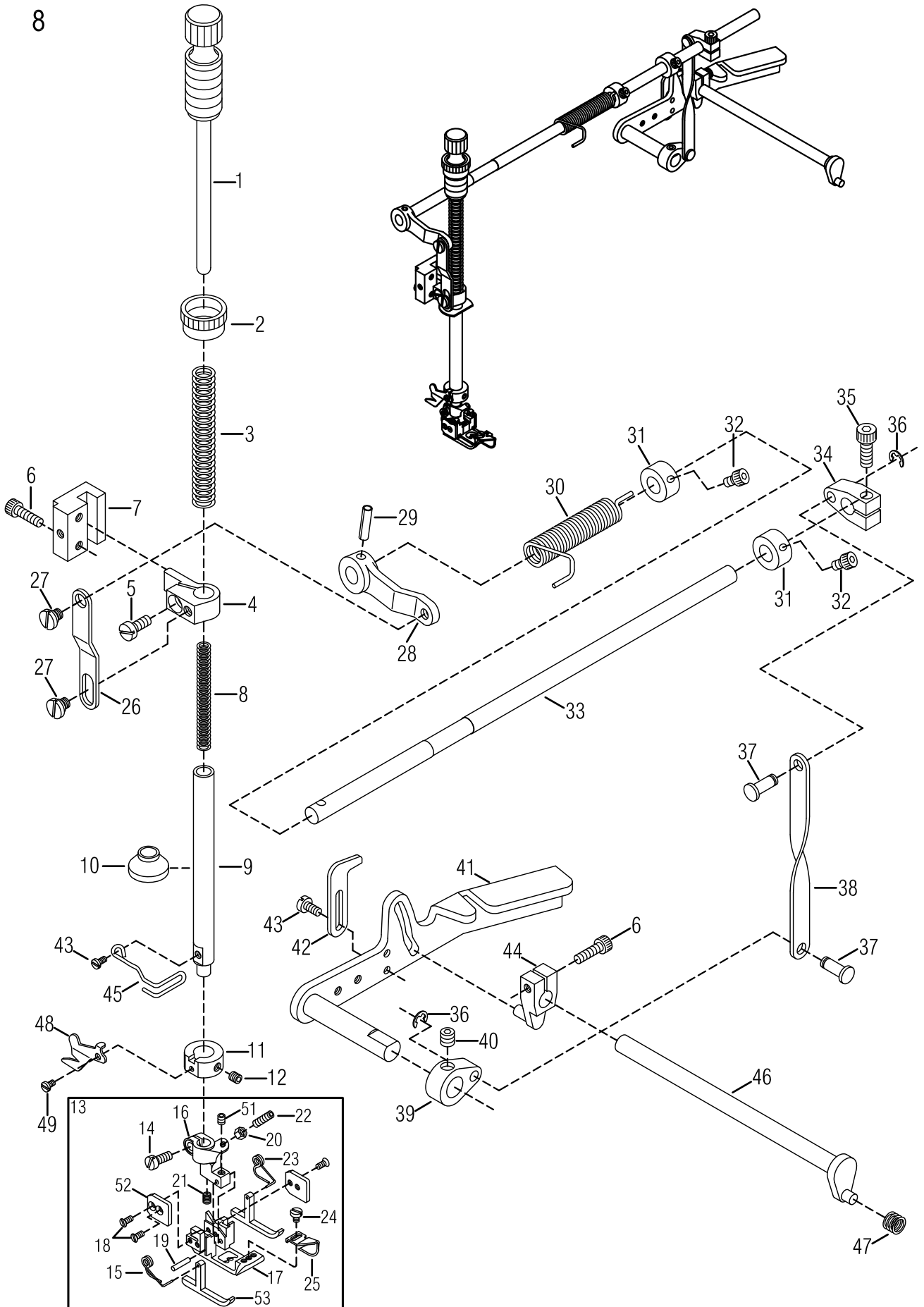
押腳機構

8

Ref. No.	Parts No.	Description	零件名稱	Amt. Req.
1	VH01	Presser Spring Regulator	壓力調節棒	1
2	VH03	Lock Nut	螺帽	1
3	VH04	Presser Bar Spring (Outer)	壓腳棒彈簧(外)	1
4	VH05	Presser Bar Connecting Bracket	壓腳固定臂	1
5	SF124	Screw (SM11 / 64 - 40 × 10.5)	螺絲	1
6	SV223	Screw (M4 - 0.7 × 14)	螺絲	3
7	VH07	Presser Bar Guide	固定臂導槽	1
8	VH09	Presser Bar Spring (Inner)	壓腳棒彈簧(內)	1
9	VH10	Presser Bar	壓腳桿	1
10	M0936	Oil Protector Ring	矽膠片	1
11	VH12	Collar (9 × 17 × 7mm)	限動環	1
12	SF228	Screw (M4 - 0.7 × 4)	螺絲	1
13-1	VH240	Presser Foot , Complete Set (240)(Optional)	壓腳組(2針4.0)(選購)	
13-2	VH248	Presser Foot , Complete Set (248)(Optional)	壓腳組(2針4.8)(選購)	
13-3	VH356	Presser Foot , Complete Set (356)(Optional)	壓腳組(3針5.6)(選購)	
13-4	VH360	Presser Foot , Complete Set (360)(Optional)	壓腳組(3針6.0)(選購)	1
13-5	VH364	Presser Foot , Complete Set (364)(Optional)	壓腳組(3針6.4)(選購)	
13-6	VH460	Presser Foot , Complete Set (460)(Optional)	壓腳組(4針6.0)(選購)	
13-7	VH464	Presser Foot , Complete Set (464)(Optional)	壓腳組(4針6.4)(選購)	
14	SF116	Screw (SM9 / 64 - 40 × 8)	螺絲	1
15	VH16	Presser Foot Spring (Left)	壓腳彈簧(左)	1
16	VH54	Upper Presser Foot	壓腳頭	1
17	VH55	Lower Presser Foot	壓腳底	1
18	SV103	Screw (SM3 / 32 - 56 × 5)	螺絲	4
19	VH20	Presser Foot Hinge Pin	壓腳結合插銷	1
20	NV11	Lock Nut	保險螺帽	1
21	VH21	Presser Foot Spring	彈簧	1
22	SV109	Screw (SM1 / 8 - 44 × 10)	螺絲	1
23	VH24	Presser Foot Spring (Right)	壓腳彈簧(右)	1
24	SV206	Screw (M2.5 - 0.45 × 3.5)	螺絲	1
25	VH26	Fabric Guide (Long)	分割片	1
26	VH27	Lifter Link	提升連桿	1
27	SF134-1	Screw (SM3 / 16 - 32 × 2)	螺絲	2
28	VH29	Lifter Link Lever	提升連結拉柄	1
29	VH30	Fastener Pin	固定銷	1
30	VH31	Lifter Spring	提升扭簧	1
31	VH32	Collor (8 mm × 16 mm × 8 mm)	定位環	2
32	SF222	Screw (M4 - 0.7 × 6)	螺絲	4
33	VH34	Lifter Shaft	壓腳提升主軸	1
34	VH35	Intermediate Lever	連接拉柄	1
35	SF231	Screw (M5 - 0.8 × 14)	螺絲	1
36	EF03	Retaining Ring	扣環	2
37	VH39	Connecting Pin	連結銷	2
38	VH40	Connecting Plate	連結器	1
39	VH41	Lifter Lever (Small)	提升拉柄(小)	1
40	SF240	Screw (M6 - 1.0 × 6)	螺絲	1

※Ref. No. 41 to 53 See the following page

8



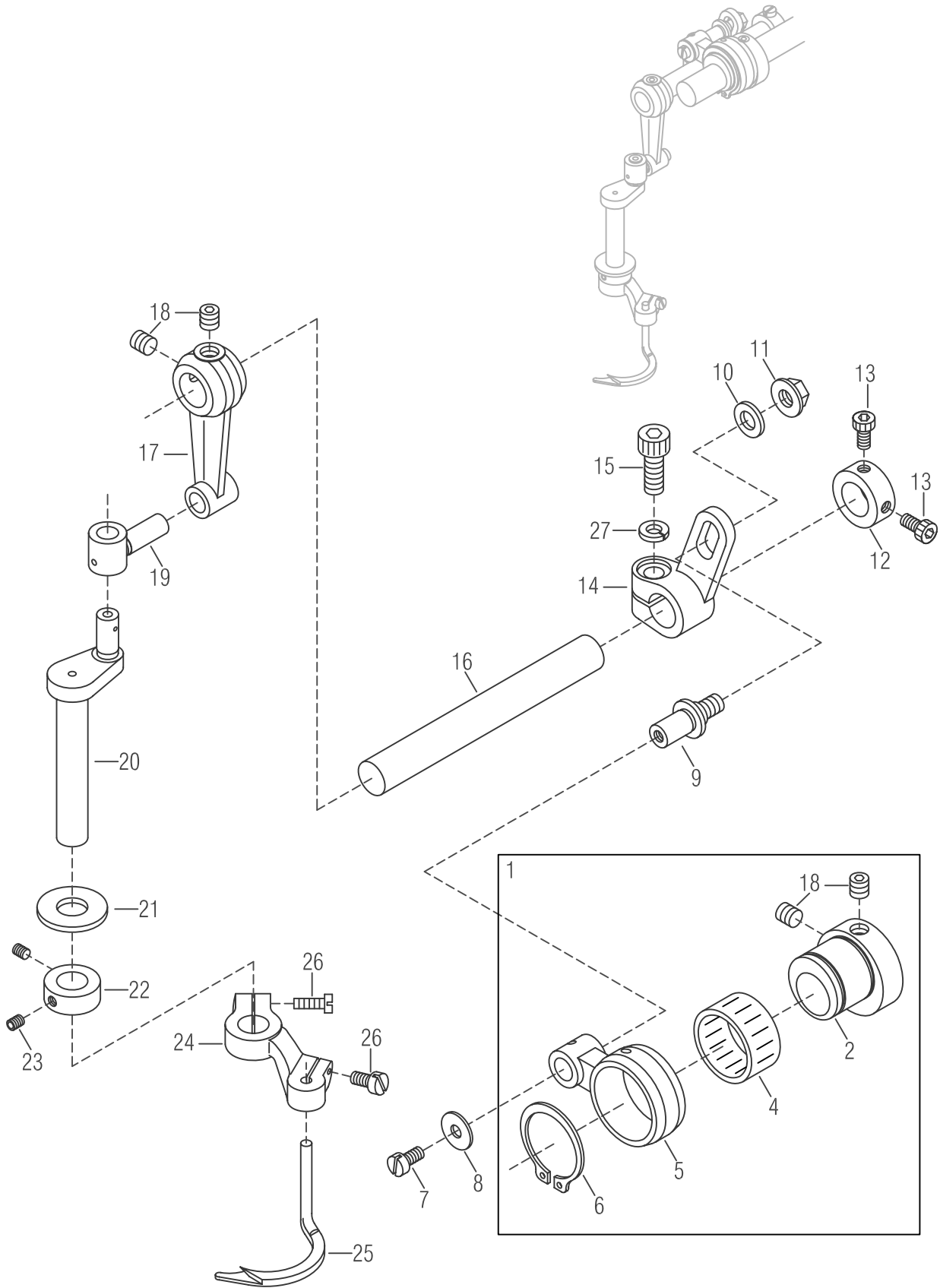
PRESSER FOOT MECHANISM

押腳機構

8

<u>Ref.</u>	<u>Parts</u>			<u>Amt.</u>
<u>No.</u>	<u>No.</u>	<u>Description</u>	<u>零件名稱</u>	<u>Req.</u>
41	VH42	Lifter Lever	揚升臂	1
42	VH43	Lifter Lever Stop	提升限位片	1
43	SF114	Screw (SM9 / 64 - 40 × 7)	螺絲	3
44	VH46	Tension Release Lever	拉力釋放槓桿	1
45	GH47	Safety Spring	安全護線	1
46	VH48-2	Tension Release Shaft	拉力釋放曲軸	1
47	VH49	Vibration Absorb Spring	防震彈簧	1
48	VH50	Thread Chain Cutting Knife	割線刀	1
49	SV102	Screw (SM3 / 32 - 56 × 3.5)	螺絲	1
50				
51	SF106	Screw (SM1 / 8 - 44 × 2.8)	螺絲	1
52	VH52	Fixed Plate	方形固定片	2
53	VH53	Left Presser Foot	T形船導片	2

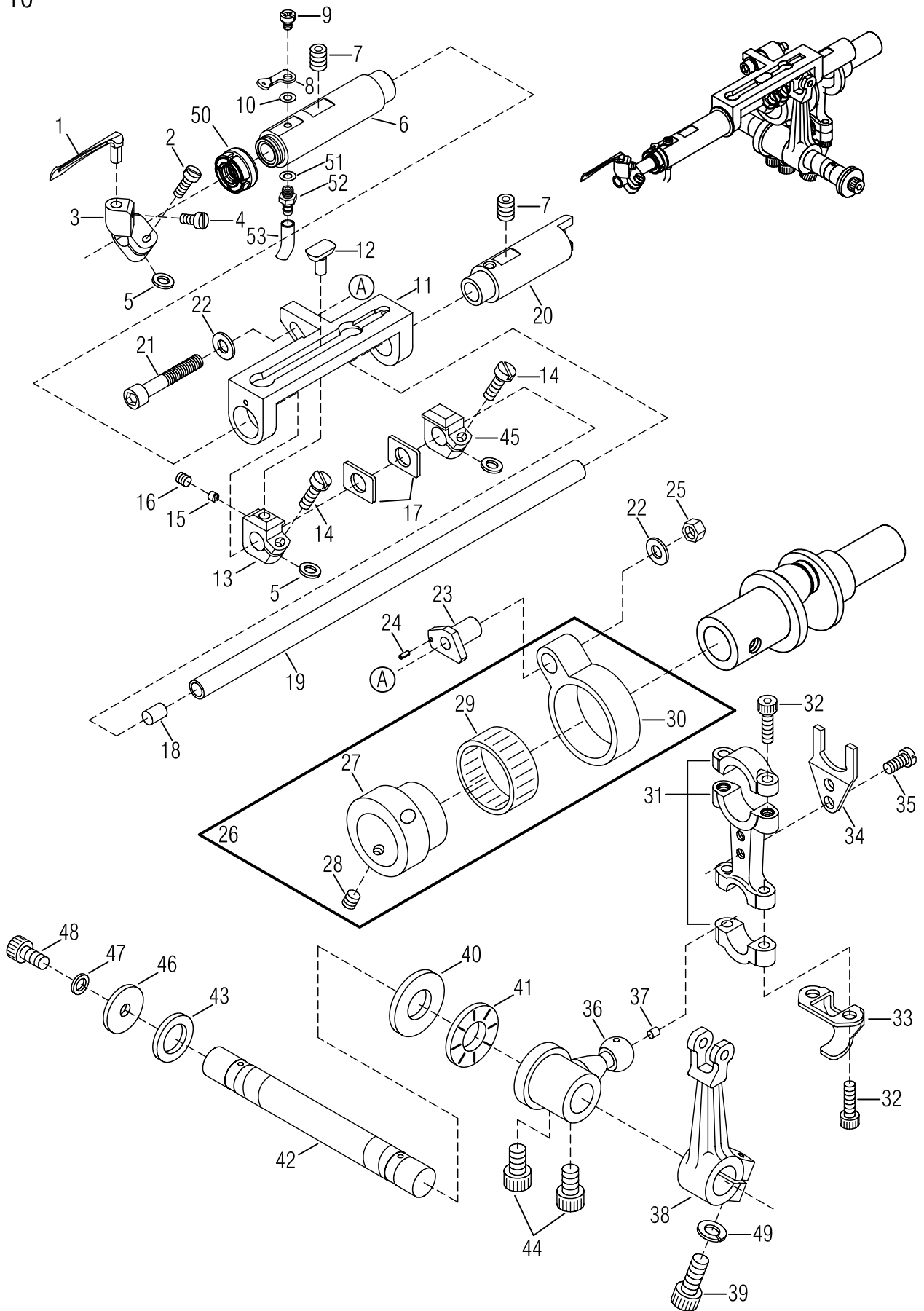
※ Ref.No. 1 to 40 See the preceding page.



SPREADER MECHANISM**上飾線勾針機構**

9

Ref. No.	Parts No.	Description	零件名稱	Amt. Req.
1	VI01	Connecting Rod , Complete Set	偏心連桿組	1
2	VI02	Eccentric	偏心輪	1
3				
4	FH19	Roller Bearing	滾針培林	1
5	VI05	Connecting Rod	培林殼連桿	1
6	VI06	Retaining Ring	扣環	1
7	SV221	Screw (M4 - 0.7 × 8)	螺絲	1
8	VI08	Washer	墊片	1
9	VI09	Adjusting Lever Pin	可調式插銷	1
10	WF06	Washer	墊片	1
11	NF31	Nut (M6 - 1.0)	螺帽	1
12	VI12	Collar	軸環	1
13	SF222	Screw (M4 - 0.7 × 6)	螺絲	2
14	VI14	Adjusting Lever	可調式接柄	1
15	SV268	Screw (M6 - 1.0 × 16)	螺絲	1
16	VI16	Driving Shaft	主動軸	1
17	VI17	Rocking Arm	搖臂	1
18	SF240	Screw (M6 - 1.0 × 6)	螺絲	4
19	VI19	Rocking Pin	延展臂	1
20	VI20-1	Spreader Bar	上叉棒	1
21	VI21	Bushing Ring	襯片	1
22	VI22	Collar (10 × 18 × 7mm)	定位軸環	1
23	SF228	Screw (M4 - 0.7 × 4)	螺絲	2
24	VI24	Spreader Holder	裝飾線擺動臂	1
25	VI25	Spreader	裝飾線結線勾	1
26	SV222	Screw (M4 - 0.7 × 12)	螺絲	2
27	15-39	Spring Washer	彈簧墊片	1



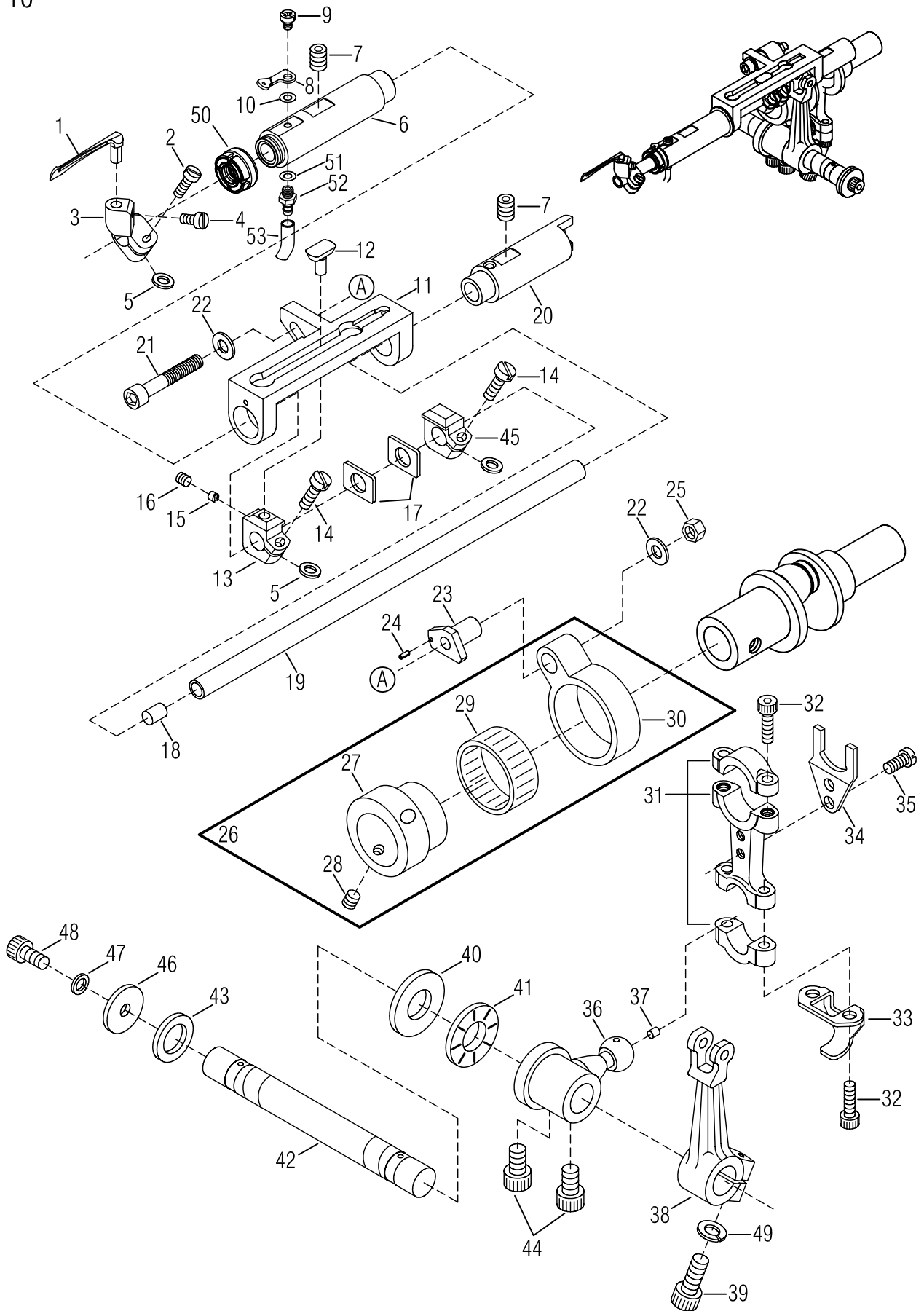
LOOPER DRIVING MECHANISM

下勾針驅動機構

10

Ref. No.	Parts No.	Description	零件名稱	Amt. Req.
1	VJ01-1	Looper	下勾針	1
2	SV312	Screw (M3.5 - 0.6 × 10)	螺絲	1
3	VJ03-2	Looper Holder	結線勾座	1
4	MEA060	Screw (M3.5 - 0.6 × 6)	螺絲	1
5	VJ05	Spacer (Fiber)	紅墊片	3
6	VJ06-1	Looper Bar Bushing (Left)	下勾針驅動軸襯套 (左)	1
7	SV264	Screw (M6 - 1 × 8)	螺絲	2
8	F0360	Looper Thread Eyelet	下飾線過線板	1
9	SV210	Screw (M3 - 0.5 × 4)	螺絲	1
10	WF03	Washer	墊片	1
11	VJ12-2	Looper Bar Guide	下勾針驅動軸導槽	1
12	VJ13-1	Slider	滑塊	1
13	VJ14	Slider Holder (Left)	滑塊固定座 (左)	1
14	SV222	Screw (M4 - 0.7 × 12)	螺絲	2
15	VJ17	Slider Presser	滑塊定位壓塊	1
16	SF228	Screw (M4 - 0.7 × 4)	螺絲	1
17	VJ19	Silder Presser	止推墊片	2
18	VJ20	Seal Plug	封閉塞	1
19	VJ21-1	Looper Bar	驅動軸	1
20	VJ23-2	Looper Bar Guide Shaft (Right)	下勾針驅動軸襯套 (右)	1
21	SV254	Screw (M5 - 0.8 × 30)	螺絲	1
22	VJ25	Washer	墊片	2
23	VJ26	Looper Rocker Adjusting Pin	下勾針搖臂調整銷	1
24	VJ27	Roll Pin	棍子銷	1
25	NV12	Nut	螺帽	1
26	F1026	Looper Rocker Connecting Rod , C . Set	下勾針搖臂連桿組	1
27	F1027	Looper Rocker Regulating Eccentric	下勾針搖臂可調偏心輪	1
28	SV250	Screw (M5 - 0.8 × 5)	螺絲	1
29	VJ32	Roller Bearing	滾針軸承	1
30	VJ33	Looper Rocker Connecting Rod	下勾針培林殼連桿	1
31	VJ34	Looper Connecting Rod	雙球連桿	1
32	SV223	Screw (M4 - 0.7 × 14)	螺絲	4
33	VJ36	Oil Splashier	撥油片	1
34	VJ37-1	Guide Fork	定位叉	1
35	SV122	Screw (SM11 / 64 - 40 × 9)	螺絲	2
36	VJ39-1	Looper Driving Lever	下勾針驅動桿	1
37	VJ40	Seal Plug	封塞	1
38	VJ41	Looper Rocker Arm	下勾針搖臂	1
39	SV270	Screw (M6 - 0.75 × 15)	螺絲	1
40	VJ43	Thrust Plate	推力墊圈	1

* Ref. No. 41 to 53 See the following page



LOOPER DRIVING MECHANISM

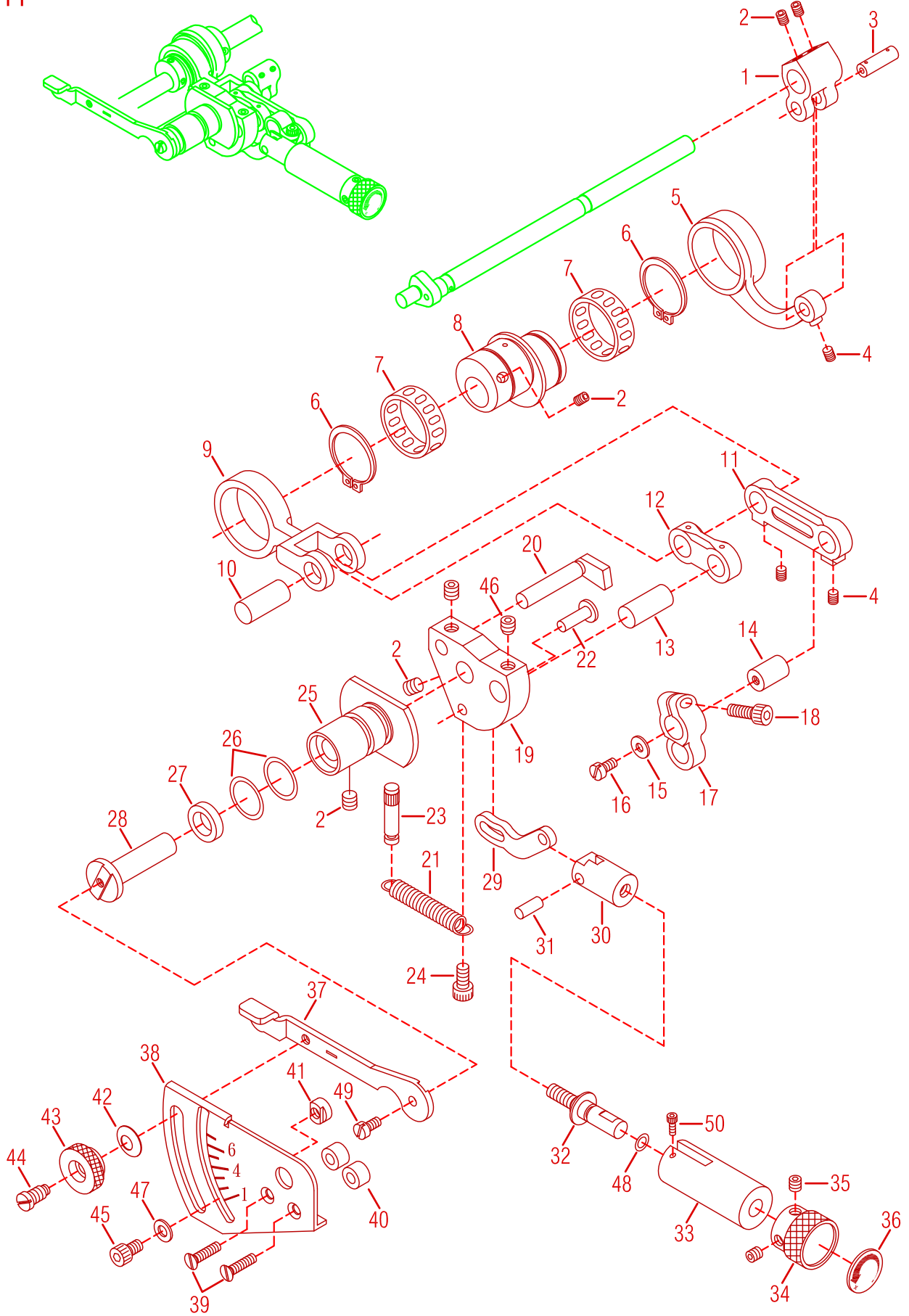
下勾針驅動機構

10

Ref. No.	Parts No.	Description	零件名稱	Amt. Req.
41	VJ44	Thrust Roller Bearing	推力滾針培林	1
42	F1042-1	Looper Driving Shaft	下勾針主軸	1
43	F1043	Driving Washer (Small)	推力墊圈 (小)	1
44	MIP080	Screw (M6 - 1.0 × 8)	螺絲	2
45	VJ14-1	Slide Holder (Right)	定位塊 (右)	1
46	F1046	Washer	墊片	1
47	SW06	Spring Washer	彈簧墊片	1
48	SV252	Screw (M5 - 0.8 × 10)	螺絲	1
49	15-39	Spring Washer	彈簧墊片	1
50	N1048	Oil Seal	止油環	1
51	FL14	Seal	紅墊片	1
52	L1217	Pipe Joint	油管接頭	1
53	FM25	Oil Tube (5 × 2.9 × 68 mm)	油管	1

*Ref. No. 1 to 40 See the preceding page.

11

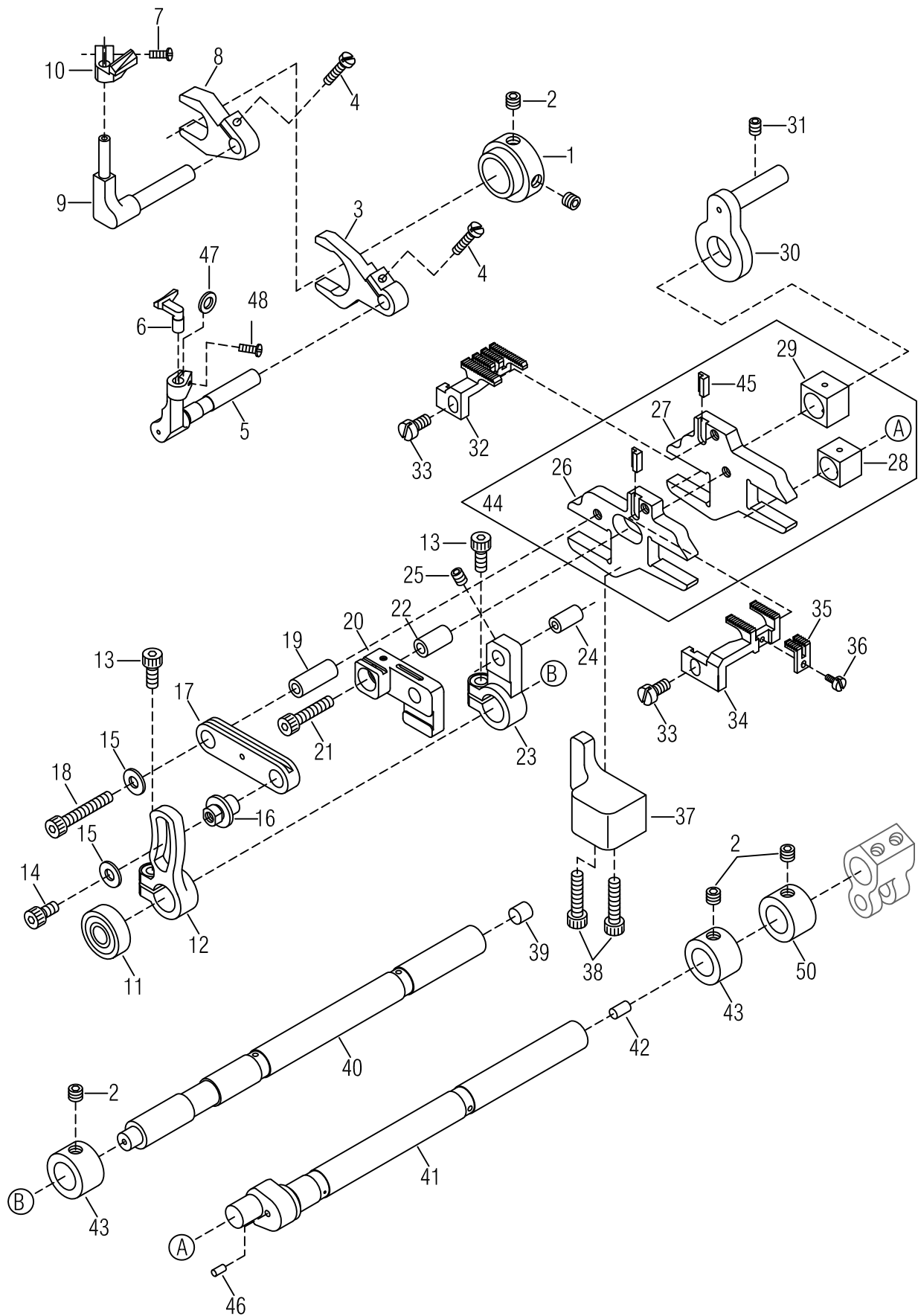


FEED DRIVING CONTROL MECHANISM

送料驅動調整機構

11

Ref. No.	Parts No.	Description	零件名稱	Amt. Req.
1	VK01	Feed Lift Lever	送料具提升桿	1
2	SF240	Screw (M6 - 1.0 × 6)	螺絲	7
3	VK03	Connecting Rod Pin	連桿銷	1
4	SV227	Screw (M4 - 0.7 × 5)	螺絲	3
5	VK05	Feed Lift Connecting Rod	培林連桿	1
6	VK06	Retaining Ring	扣環	2
7	VK07	Roller Bearing	滾針培林	2
8	F1108	Feed Eccentric	送料具偏心輪	1
9	VK10	Feed Connecting Rod	送料具連桿	1
10	VK11-1	Connecting Rod Pin	連桿軸	1
11	VK12	Lever Link (Long)	提環桿 (長)	1
12	VK13	Lever Link (Short)	提環桿 (短)	1
13	VK14-1	Connecting Rod Link Pin	連桿插銷	1
14	VK15	Lever Link Pin	提環桿插銷	1
15	VI08	Washer	墊片	1
16	SV221	Screw (M4 - 0.7 × 8)	螺絲	1
17	VK18	Feed Shaft Lever	進給軸拉柄	1
18	SF226	Screw (M4 - 0.7 × 12)	螺絲	1
19	VK20	Control Bracket	三角承座	1
20	VK21	Connecting Rod Guide	連桿導軸	1
21	VK22	Control Bracket Spring	承座拉簧	1
22	VK23	Control Link Pin	控制連桿插銷	1
23	VK24	Spring Holding Pin	彈簧掛桿	1
24	SV252	Screw (M5 - 0.8 × 10)	螺絲	1
25	F1125	Control Lever Shaft Bushing	控制桿軸襯套	1
26	RV18	O Ring	O型油環	2
27	VK28	Oil Seal	油封	1
28	VK29	Control Lever Shaft	承座軸	1
29	VK30	Control Link	微調連桿	1
30	VK31-1	Control Link Holder	引動螺帽	1
31	VK32	Knock Pin	棍子銷	1
32	VK33	Adjusting Screw	微調螺桿	1
33	VK34-1	Bushing	襯套	1
34	VK35	Adjusting Knob	針距微調旋鈕	1
35	SV250	Screw (M5 - 0.8 × 5)	螺絲	2
36	VK37	Stitch Length Indicator	針距方向板	1
37	VK38-1	Feed Control Lever	差動控制桿	1
38	VK39	Feed Graduations	針距尺寸刻度板	1
39	SV233	Screw (M4 - 0.7 × 14)	螺絲	2
40	VK41	Spacer	墊塊	2
41	VK42	Control Lever Stop	控制桿止塊	2
42	VK43-1	Conical Spring Washer	錐形彈簧墊片	1
43	VK44	Nut	螺帽	1
44	SV267	Screw (M6 - 1 , M4.5 - 0.5)	螺絲	1
45	SV259	Screw (M5 - 0.8 × 6)	螺絲	2
46	SV271	Screw (M6 - 1.0 × 6)	螺絲	1
47	VK48	Washer	墊片	2
48	RF21	O Ring	O型油環	1
49	SV232	Screw (M4 - 0.7 × 10)	螺絲	1
50	17-22	Screw (M3 - 0.5 × 4)	螺絲	1

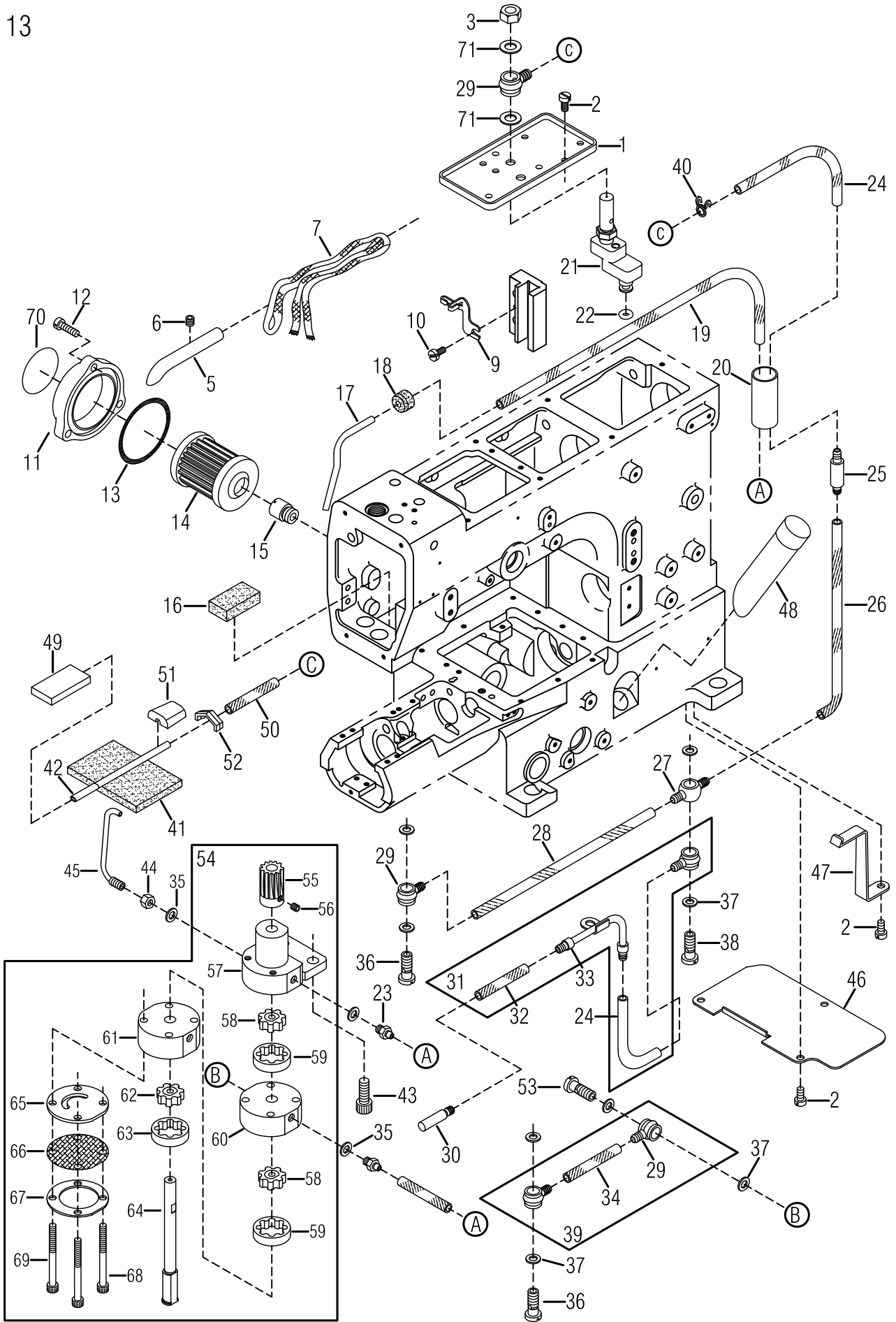


FEED DRIVING MECHANISM & NEEDLE GUARD

頂針片及送料具驅動機構

12

Ref. No.	Parts No.	Description	零件名稱	Amt. Req.
1	VL01	Needle Guard (Front) Eccentric	頂針片(前)偏心輪	1
2	SV250	Screw (M5 - 0.8 × 5)	螺絲	5
3	VL03	Needle Guard (Front) Lever	頂針擺動曲柄(前)	1
4	SV216	Screw (M3 - 0.5 × 12)	螺絲	2
5	VL05	Needle Guard (Front) Holder	頂針片(前)固定座	1
6	VL06-1	Needle Guard (Front)	頂針片(前)	1
7	SV217	Screw (M3 - 0.5 × 8) (VG-888A)	螺絲 (VG888A用)	2
8	VL08	Needle Guard (Rear) Lever	頂針擺動曲柄(後)	1
9	VL09	Needle Guard (Rear) Holder	頂針片(後)固定座	1
10	VL10-1	Needle Guard (Rear)	頂針片(後)	1
11	VL12	Roller Bearing	滾珠培林	1
12	F1212	Differential Lever	差動搖臂	
13	SF225	Screw (M4 - 0.7 × 10)	螺絲	2
14	SF222NI	Screw (M4 - 0.7 × 6)	螺絲	1
15	F1215	Washer	墊片	2
16	VL17-1	Differential Feed Adjusting Pin	差動調整插銷	1
17	VL18	Differential Feed Bar Driving Connection	差動軸驅動連桿	1
18	SV236-1	Screw (M4 - 0.7 × 23)	螺絲	1
19	VL23	Driving Connection Bushing (Long)	驅動連桿襯套(長)	1
20	F1220-3	Main Feed Bar Connection	主送料具軸驅動連桿	1
21	SV231	Screw (M4 - 0.7 × 18)	螺絲	1
22	VL29	Driving Connection Bushing (Short)	驅動軸連桿襯套(短)	1
23	F1223	Main Feed Lever	主送料具搖臂	1
24	VL31	Driving Connection Pin	驅動連桿插銷	1
25	SF228	Screw (M4 - 0.7 × 4)	螺絲	1
26	F1226	Differential Feed Bar	差動送料具驅動座	1
27	F1227	Main Feed Bar	主送料具座	1
28	VL35	Feed Lift Block (Front)	送料具滑塊(前)	1
29	VL36	Feed Lift Block (Rear)	送料具滑塊(後)	1
30	VL37	Feed Bar Guide	送料具導桿	1
31	SV227	Screw (M4 - 0.7 × 5)	螺絲	1
32	F1232	Main Feed Dog	九齒(主齒)	1
33	SV221	Screw (M4 - 0.7 × 8)	螺絲	2
34	F1234	Differential Feed Dog	差動齒	1
35	VL42	Differential Feed Dog (Middle)	小差動齒	1
36	SF205	Screw (M2.6 - 0.45 × 5)	螺絲	1
37	F1237	Guide Block	送料具導正塊	1
38	SV223	Screw (M4 - 0.7 × 14)	螺絲	2
39	VL46	Seal Plug	封塞	1
40	VL47-1	Feed Rocker Shaft	搖臂主軸	1
41	VL48-1	Feed Lift Shaft	提升主軸	1
42	VL49	Seal Plug	封塞	1
43	VL43	Collar	軸環(左)	2
44	F1244	Feed Bar, Complete Set	送料具固定座組	1
45	F1245	Fixed Unit	九齒固定塊	2
46	VL52	Seal Plug (2.5 × 5)	塑膠塞	1
47	VJ05	Spacer (Fiber)	紅墊片	1
48	MDP080	Screw (M3 - 0.5 × 8)	螺絲	1
49				
50	VL50	Collar	軸環(右)	1



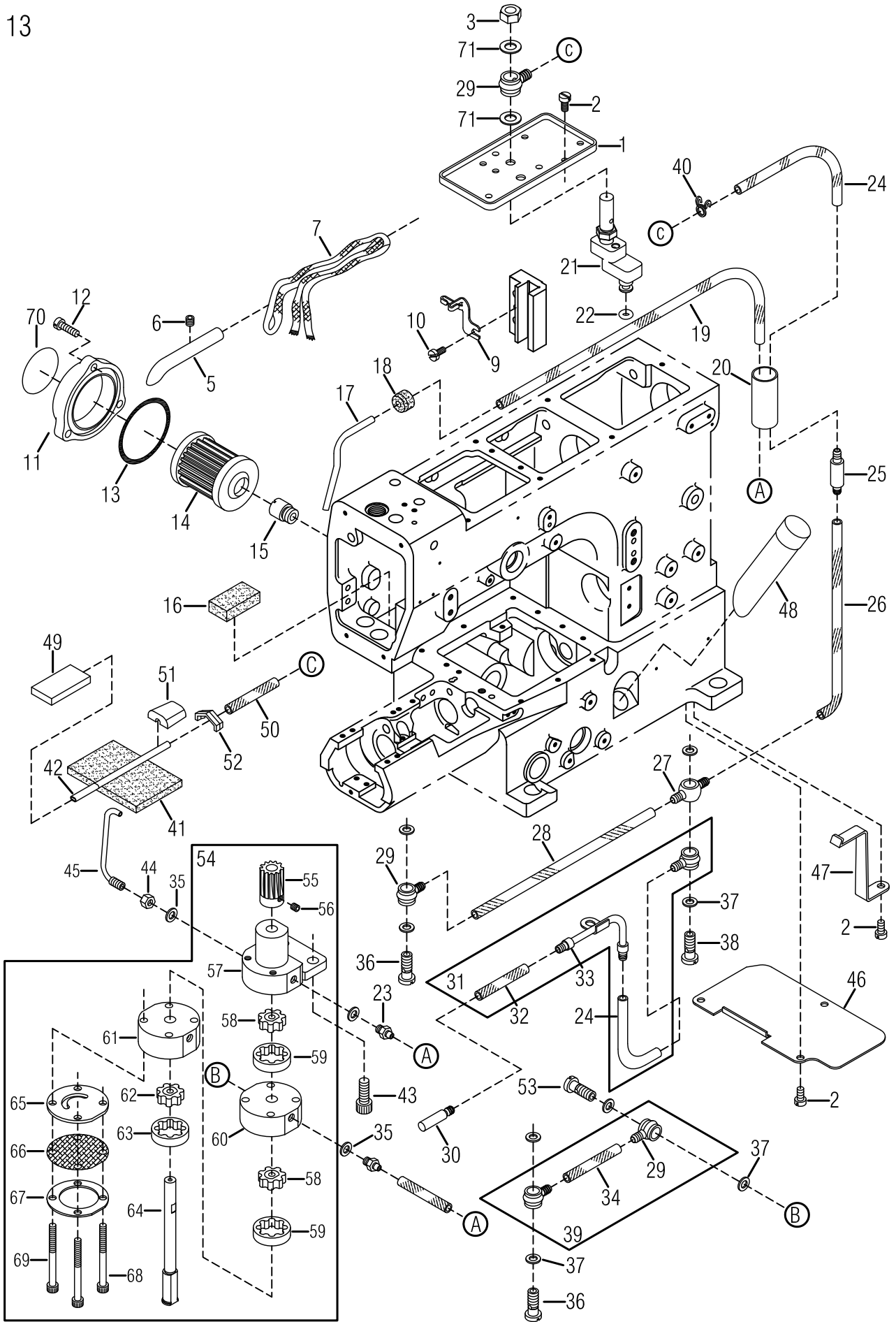
LUBRICATING MECHANISM

機器給油迴油機構

13

Ref. No.	Parts No.	Description	零件名稱	Amt. Req.
1	VM01	Oil Receiver	承油盤	1
2	SV221	Screw (M4 - 0.7 × 8)	螺絲	6
3	NV13	Nut	螺帽	1
4				
5	VM05	Needle Bar	導油銅管	1
6	SV227	Screw (M4 - 0.7 × 5)	螺絲	1
7	VM07	Oil Wick	油蕊	1
8				
9	VM09	Oil Wick Holder	油蕊固定器	1
10	SF114	Screw (SM 9 / 64 - 40 × 7)	螺絲	1
11	FL19-2	Oil Filter Cap	濾油封蓋	1
12	SF127	Screw (SM11 / 64 - 40 × 16)	螺絲	3
13	RF28	Oil Ring (P42)	O形油環	1
14	FL20	Oil Filter	濾油器	1
15	FL21	Oil Filter Connector	濾油器連接頭	1
16	VM16	Felt (Upper)	吸油棉 (上)	1
17	VM17	Suction Pipe	迴油管	1
18	VM18	Suction Pipe Bushing	迴油管固定塞	1
19	VM19	Oil Tube (3 × 5 × 450 mm)	油管	1
20	VM20	Draining Pipe	油路套管	1
21	N1304-1	Oil Sight Top Nozzle	外視油量上噴嘴	1
22	L1202	O-ring	O型環	1
23	FL15	Oil Tube (Long), Complete Set	油嘴	2
24	VM24-1	Oil Tube (4 × 6 × 160mm)	油管	2
25	VM25	One - return Valve Unit One - return	止油閥	1
26	VM26	Oil Tube (4 × 6 × 280 mm)	油管	1
27	VM27	Oil Tube Joint , Two Way	雙向油管接頭	1
28	VM28	Oil Tube (4 × 6 × 35 mm)	油管 (4 × 6 × 35 mm)	1
29	VM29-1	Oil Tube Joint , One Way	單向油管接頭	5
30	VM30	Lower Shaft Oiling Outlet	轉軸部噴油頭	1
31	VM31	Looper Shaft Oiling Set	勾針軸噴油組	1
32	VM32	Oil Tube (4 × 6 × 43 mm)	油管	1
33	VM33	Dust - proof Plate	勾針軸噴油孔	1
34	VM34	Oil Filter Screen	油管 (4 × 6 × 30 L)	1
35	FL14	Seal	紅墊片	3
36	SV140	Fitting Stud (Short)	放油螺絲 (短) 單孔	2
37	VM37	Oil Sight Gauge	紅墊片	9
38	SV141	Fitting Stud (Long)	放油螺絲 (長) 雙孔	1
39	VM39	Oil Tube (Short), Complete Set	油管組 (短)	1
40	VM35-1	Oil Tube Clamp	油管束子	1
41	H1468	Oil Felt	吸油棉	1
42	VM42	Suction Pipe	吸油管	1
43	SV268	Screw (M6 - 1.0 × 16)	螺絲	2
44	NV12	Nut	螺帽	1
45	VM46	Oil Nozzle For Worm Gear	驅動蝸齒噴油嘴	1

※ Ref. No. 46 to 71 See the following page



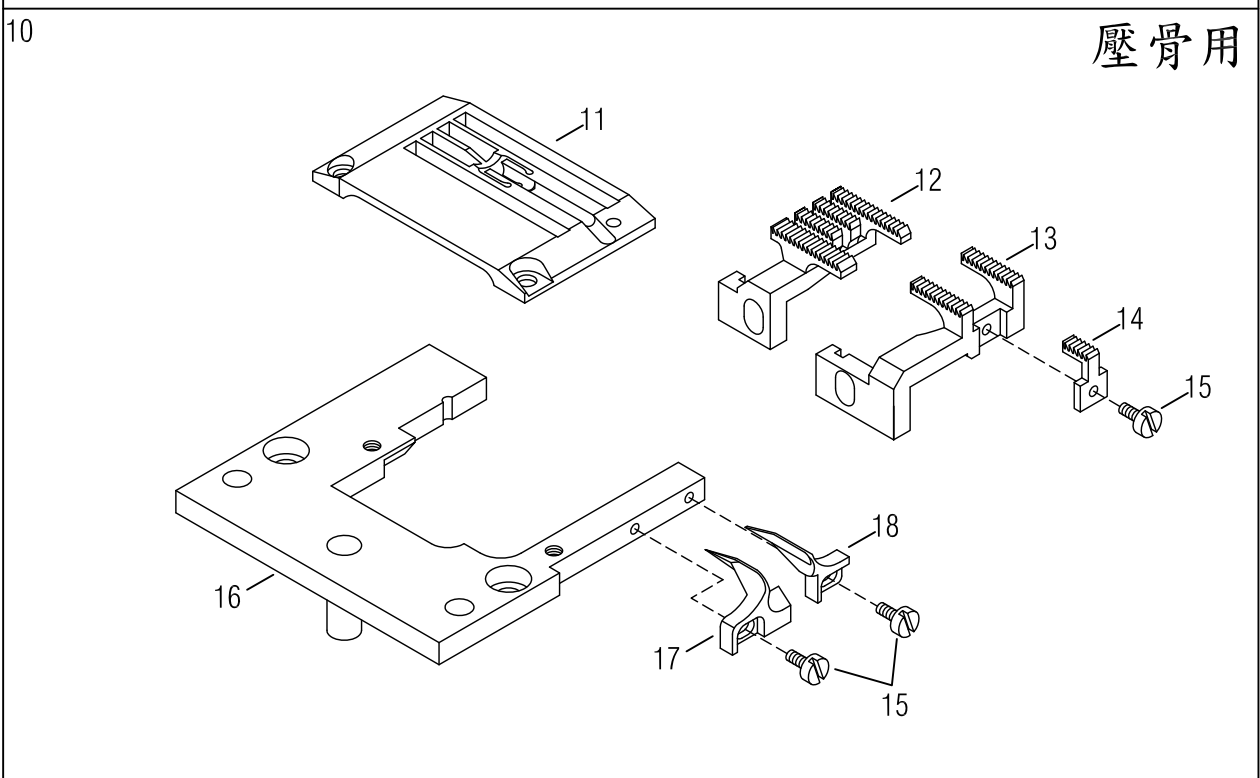
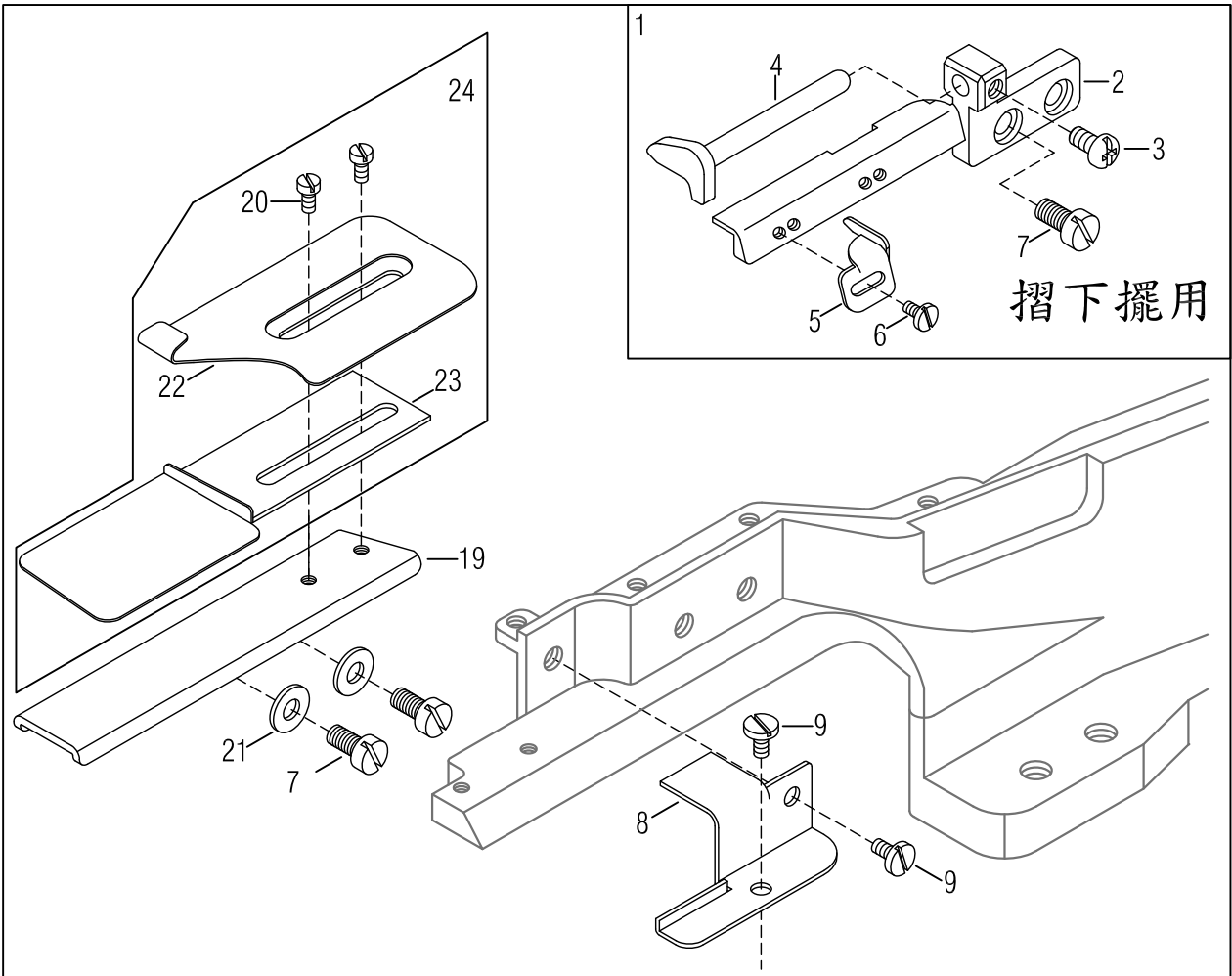
LUBRICATING MECHANISM

機器給油迴油機構

13

Ref. No.	Parts No.	Description	零件名稱	Amt. Req.
46	VM47	Dust - Proof Plate	防塵蓋	1
47	VM48-1	Oil Tube Stay	油管固定架	1
48	VM49	Oil Sight Gauge	外視油量計	1
49	VM50	Draining Felt (Lower)	吸油棉 (下)	1
50	VM51	Oil Tube (4 × 6 × 370 mm)	油管 (4 × 6 × 370 mm)	1
51	VM52	Suction Pipe Stay	吸油管固定塞	1
52	VM53	Oil Filter	濾網	1
53	SV263	Fitting Stud	轉油螺絲	1
54	VM40	Oil Pump , Complete Set	油泵組	1
55	VM41	Oil Pump Driving Worm Gear	油泵驅動蝸齒	1
56	SF228	Screw (M4 - 0.7 × 4)	螺絲	2
57	VM40-11	Pump Upper Base	油泵主體	1
58	VM40-32	Inner Gear	內輪子 (薄 6mm)	2
59	VM40-62	Outer Gear	外輪子 (薄 6mm)	2
60	VM40-21	Pump Inter Base	油泵中層	1
61	VM40-31	Pump Lower Base	油泵下層	1
62	VM40-42	Inner Gear	內輪子 (厚 7.5mm)	1
63	VM40-52	Outer Gear	外輪子 (厚 7.5mm)	1
64	F1364	Center Shaft	油泵主軸	1
65	VM40-2	Lower Base Washer	油泵底座墊片	1
66	VM40-8	Oil Filter	油泵濾網	1
67	VM40-9	Filter Plate	固定濾網環	1
68	SV237	Screw (M4 - 0.7 × 40)	螺絲	2
69	SV238	Screw (M4 - 0.7 × 45)	螺絲	2
70	FL26	Sticker	濾油貼紙	1
71	GB24	Washer	墊圈	2

※ Ref. No. 1 to 45 See the preceding page.

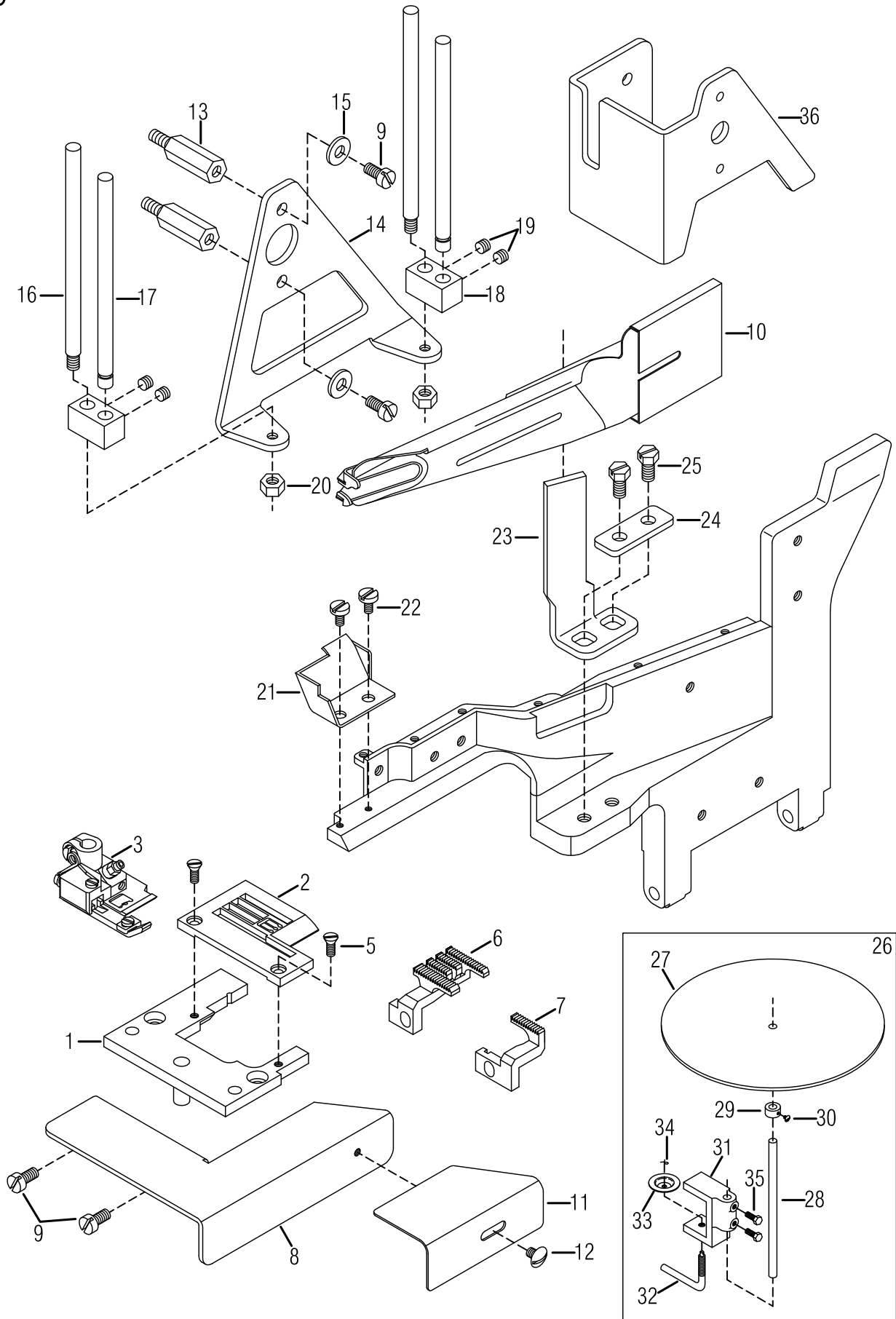


ATTACHMENT FOR HEMMING & SEAM COVERING (OPTIONAL)

專用配件(選購)

14

Ref. No.	Parts No.	Description	零件名稱	Amt. Req.
1	F1401	Bottom Hemming Folder	折下擺組	1
2	F1402	Folder Stand	折下擺固定座	1
3	M0908	Screw (M4 - 0.7 × 5)	特製螺絲	1
4	F1404	Width Aadjuster	可調擋邊	1
5	F1405	Fabric Edge Guide (Left)	左擋邊	1
6	GB08	Screw (M3 - 0.5 × 3.5)	螺絲	1
7	GJ36	Screw (M4 - 0.7 × 5.8)	螺絲	4
8	F1408	Dust - proof Cover	缺口防塵蓋	1
9	SV215	Screw (M3 - 0.5 × 5)	螺絲	2
10	F1410	Gauge Set For Covering Seam	立骨布導器配件組	1
11	VG56323	Stitch Plate (Fabric Guide)(356)(Optional)	(選購)針板 (立骨)(356)(斜度)(中溝)	1
	VG64323	Stitch Plate (Fabric Guide)(364)(Optional)	(選購)針板 (立骨)(364)(斜度)(中溝)	
12	F1232	Main Feed Dog	主齒	1
13	F1234	Differential Feed Dog	差動齒	1
14	VL42-1	Differential Feed Dog (Middle)	小齒 (壹齒)	1
15	SF205	Screw (M2.6 - 0.45 × 5)	螺絲	3
16	F0215-1	Stitch Plate Support	針板支架	1
17	14-19	Fabric Guide (Left)	立骨布導器 (左)	1
18	14-20	Fabric Guide (Right)	立骨布導器 (右)	1
19	F1419	Fabric Joining Plate	併縫加寬板	1
20	GW19	Screw (M4 - 0.7 × 8)	螺絲	2
21	WF04	Washer	墊片	2
22	GW17	Upper Binding Plate	四針併縫喇叭上片	1
23	GW18	Lower Binding Plate	四針併縫喇叭下片	1
24	GW13	Fabric Joining Binder	四針併縫喇叭組	1



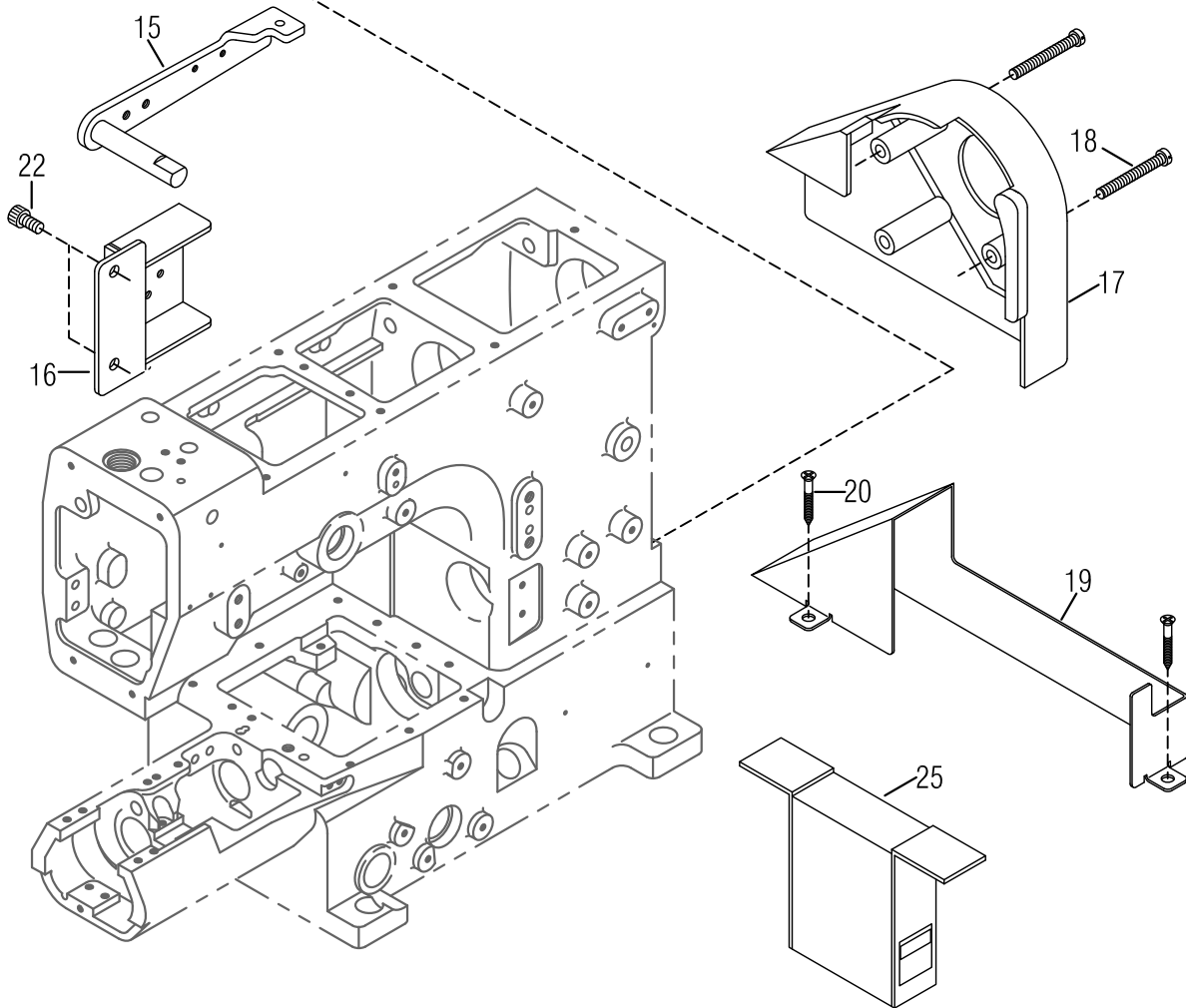
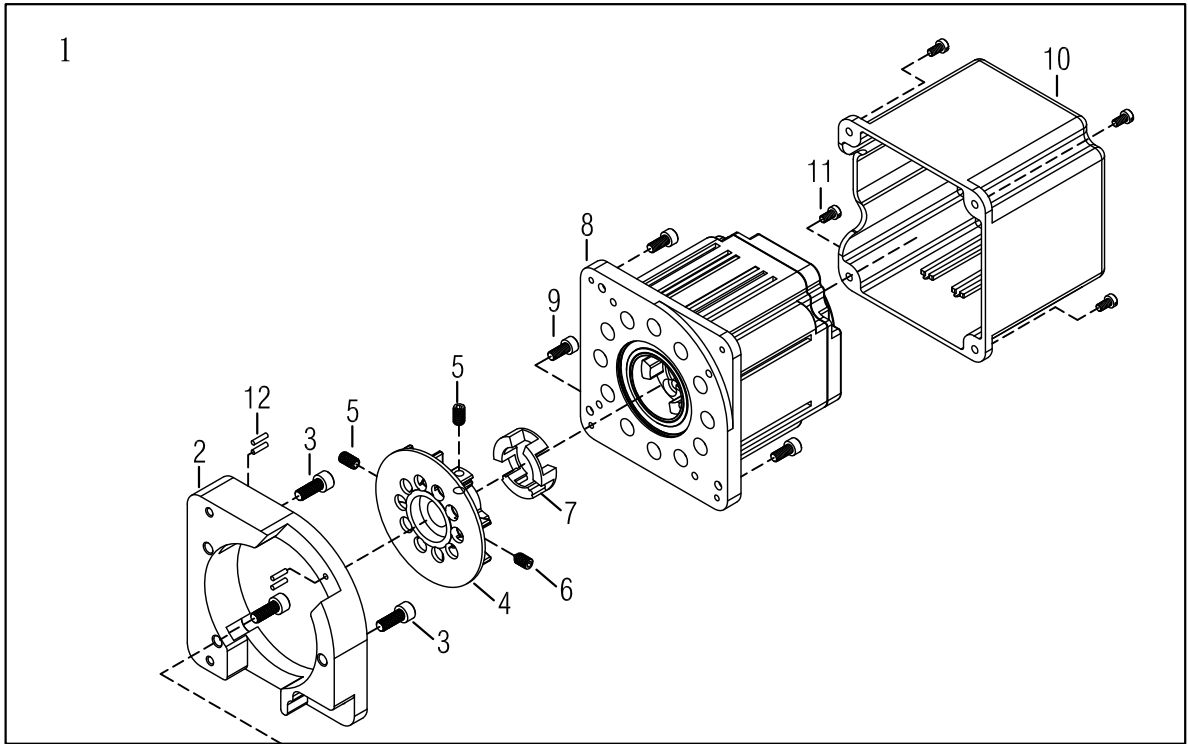
TAPE BINDING DEVICE & ITS NEEDLE GAUGE (OPTIONAL)

標準喇叭滾邊裝置(選購)

15

Ref. No.	Parts No.	Description	零件名稱	Amt. Req.
1	VB15-1	Stitch Plate Support	針板支架	1
2	VG40231	Stitch Plate (240)(Optional)	(選購)針板 (240)(車喇叭)(四溝)	1
	VG56331	Stitch Plate (356)(Optional)	(選購)針板 (356)(車喇叭)(四溝)	
	VG64331	Stitch Plate (364)(Optional)	(選購)針板 (364)(車喇叭)(四溝)	
3	VH240S	Presser Foot (240)(Optional)	壓腳 (240)(選購)	1
	VH356S	Presser Foot (356)(Optional)	壓腳 (356)(選購)	
	VH364S	Presser Foot (364)(Optional)	壓腳 (364)(選購)	
4				
5	SV219	Screw (M3 - 0.5 × 7.4)	螺絲	2
6	F1232S	Main Feed Dog	主齒	1
7	F1234S	Differential Feed Dog	差動齒	1
8	28-8	Binding Widen Plate	L型加寬板	1
9	SV221	Screw (M4 - 0.7 × 8)	螺絲	4
10	GW01	Tape Binder	滾領器 (喇叭)	1
11	28-11	Adjusting Plate	調整板	1
12	SF118	Screw (SM9 / 64 - 40 × 4)	螺絲	1
13	29-13	Screw (M4 - 0.7 × 8)	螺絲	2
14	29-12	Bracket	A型支架	1
15	WF04	Washer	墊片	2
16	29-16	Tape Guide	螺軸	2
17	29-17	Tape Guide	支軸	2
18	29-18	Fixed Block	固定方塊	2
19	SV242	Screw (M4 - 0.7 × 3)	螺絲	4
20	NF12	Nut	螺帽	2
21	F1521	Binder Kit	喇叭盒	1
22	SV215	Screw (M3 - 0.5 × 5)	螺絲	2
23	F1523	L Bracket	L支架	1
24	F1524	Washer	方型墊片	1
25	GW07	Screw (M5 - 0.8 × 16)	螺絲	2
26	28-15	Tape Disc C. Set	布條盤組	1
27	28-16	Tape Disc	布條盤	1
28	28-17	Tape Disc Post	布條盤軸	1
29	28-18	Collar	軸環	1
30	28-19	Screw	螺絲	1
31	28-20	Fixture	固定夾架	1
32	28-22	Fixing Lever	固定螺桿	1
33	28-23	Fixed Disc	固定圓盤	1
34	28-24	Pin	插銷	1
35	28-25	Screw	螺絲	2
36	F1536	Bracket Link Base	A型支架連接座(切線用)	1

16



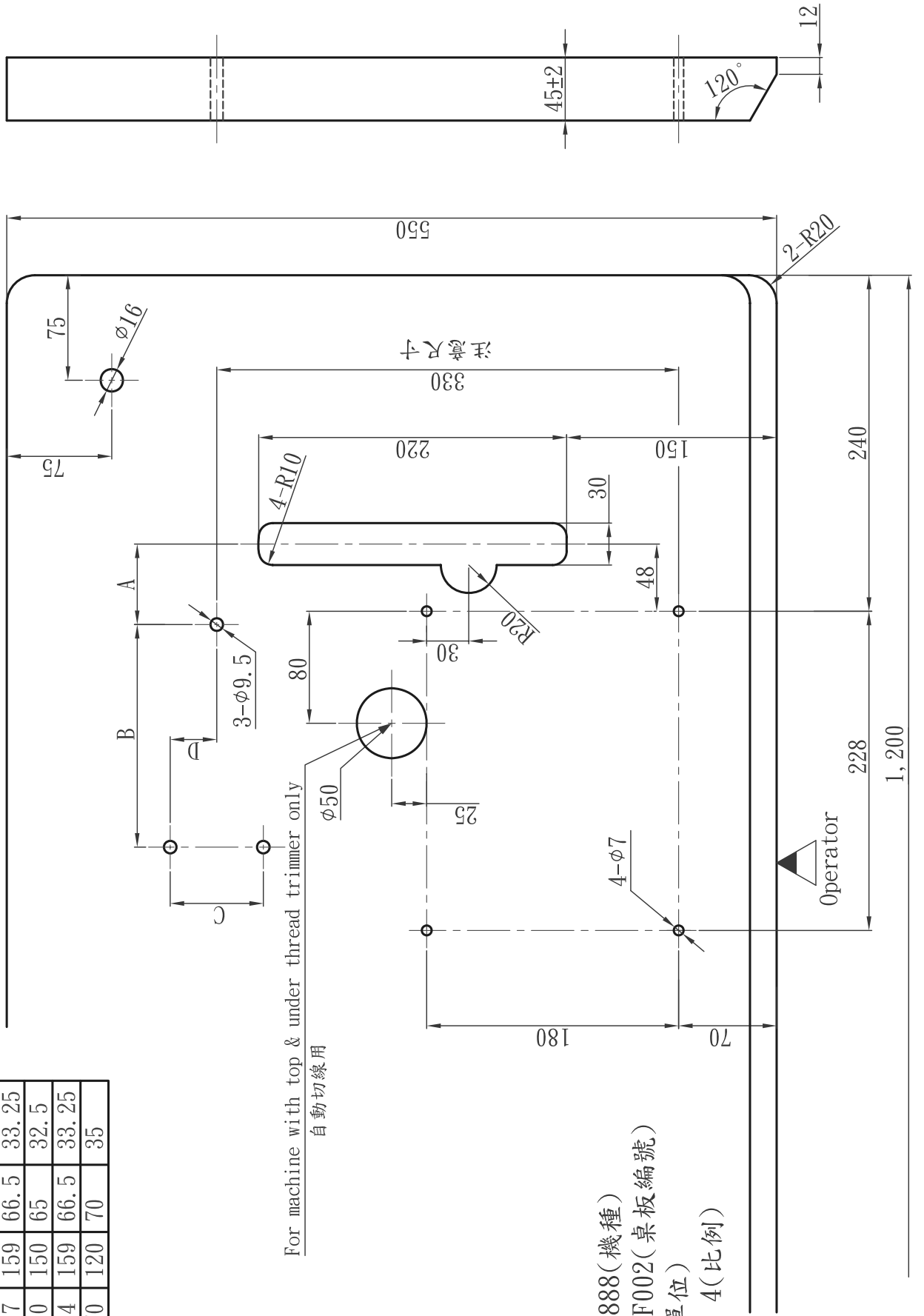
COMPACT—SIZE SERVO MOTOR & ATTACHMENT

電子小馬達傳動機構

16

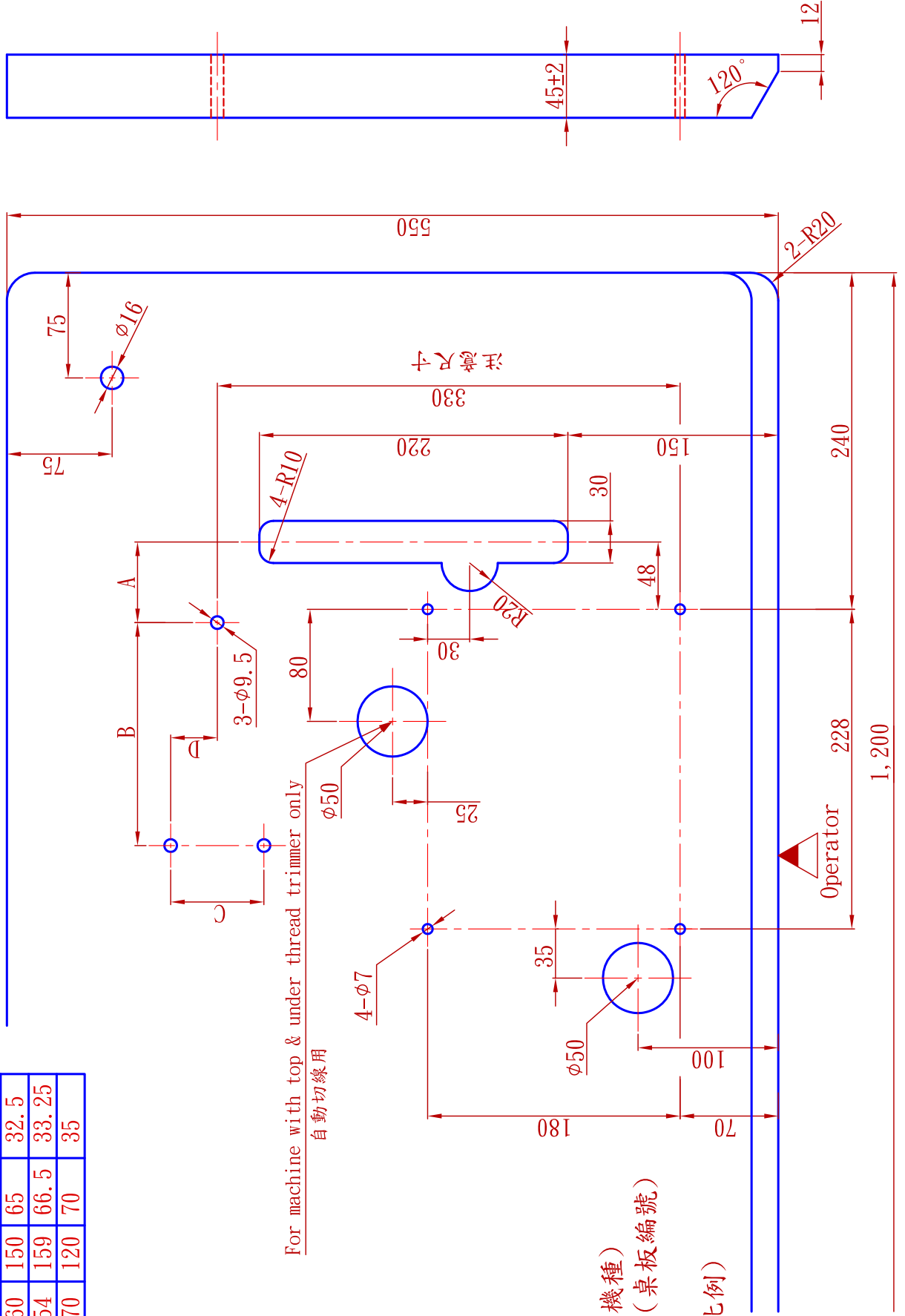
Ref. No.	Parts No.	Description	零件名稱	Amt. Req.
1	VG1701	Direct-drive Servo Motor Assy	直驅馬達整組	1
2	VG1702-1	Machine Rest Board	連接座	1
3	SF244	Screw (M6 - 1.0 × 16)	螺絲	3
4	VG1704	Head Fan Motor B Ass'y	風扇	1
5	SF241	Screw (M6 -1.0 × 10)	螺絲	2
6	MIR110	Screw (M6 -1.0 × 10)尖	螺絲	1
7	VG1707	Rubber Cshion	防震橡膠	1
8	VG1708-1	AC Direct-drive Servo Motor	AC值驅馬達	1
9	SF230	Screw (M5 -0.8 × 12)	螺絲	3
10	VG1710	Safety Cover	馬達護蓋	1
11	SV221	Screw (M4 -0.7 × 8)	螺絲	4
12	J0722	Pin	固定銷	4
13				
14				
15	F1615	Foot Lift Lever	壓腳提升柄	1
16	F1616	Solenoid Base	電子閥固定座	1
17	15-27	Belt Cover (Top)	皮帶蓋 (上)	1
18	15-28	Screw (M6 - 1.0 × 48)	螺絲	3
19	15-23	Belt Guard	皮帶安全蓋	1
20	15-24	Screw (SM5 / 32)	木栓螺絲	3
21				
22	SV221	Screw (M4 - 0.7 × 8)	螺絲	2
23				
24				
25	VG1725	Control Box	控制箱	1

Maker	A	B	C	D
Panasonic	57	159	66.5	33.25
Mitsubishi	60	150	65	32.5
Hitachi	54	159	66.5	33.25
Wang sing	70	120	70	35



Model: VG-888 (機種)
Table No: F002 (桌板編號)
Unit: mm (單位)
Scale: 1 / 4 (比例)

Maker	A	B	C	D
Panasonic	57	159	66.5	33.25
Mitsubishi	60	150	65	32.5
Hitachi	54	159	66.5	33.25
Wang sing	70	120	70	35



Model: VG-888 (機種)
Table No: F003 (桌板編號)
Unit: mm (單位)
Scale: 1 / 4 (比例)



SHING LING®
 星菱牌工業用縫紉機
INDUSTRIAL SEWING MACHINE

TAIWAN
 百分之百台灣製造
 100% Made in Taiwan

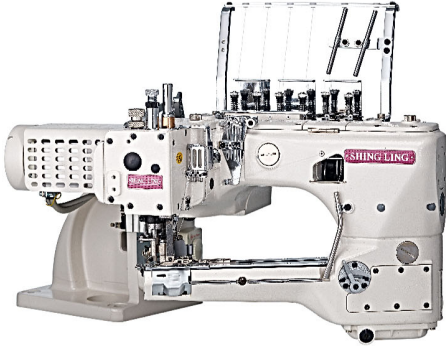
CS
 台正字第8144號



TAIWAN
 EXCELLENCE 2012

SL-703-GX-452/460/DS/PLA/VD

4-needle 6-thread feed-off-the-arm Interlock Flatseaming Machine with dual differential feed ratio regulator
 手臂型四針六線併縫機(附雙差動送布齒裝置)



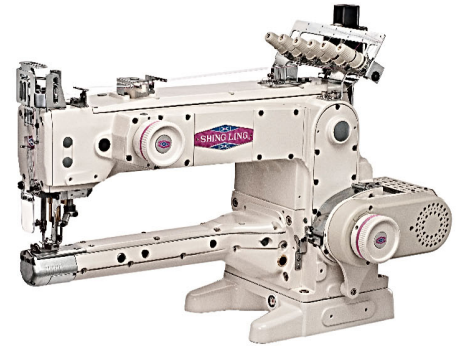
SL-2700-AST/EST

Feed-up-the-arm Interlock Machine with Compact Servo Motor and Thread Trimmer
 縱筒型三針五線雙面飾綳縫機



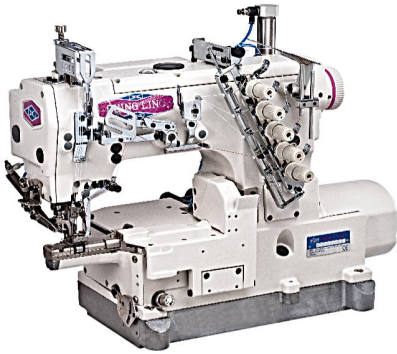
SL-2800-356/SM

Feed-up-the-arm Interlock Machine with Compact Servo Motor and Thread Trimmer
 縱筒型三針五線雙面飾綳縫機



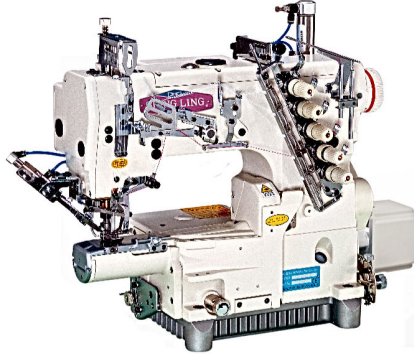
VG-999ES-AST-TF-DS

Extremely-Small Cylinder-bed Interlock Machine with Thread Trimmer and Top Feeder
 超細筒型三針五線雙面飾綳縫機



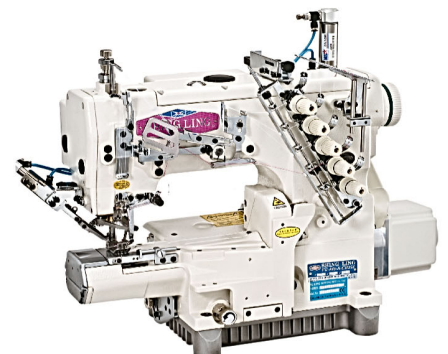
VG-888S-TF-AST

Small Cylinder-bed Interlock Machine with Thread Trimmer and Top Feeder
 細筒型三針五線雙面飾綳縫機(附上送裝置)



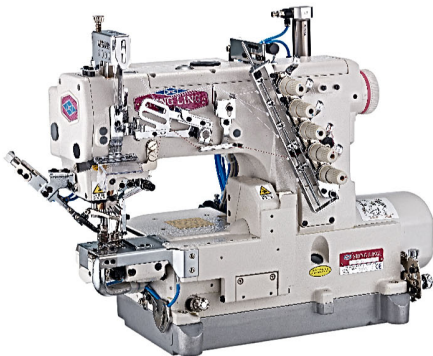
VG-888A-TF/AST

Top Feeder for 3-needle 5-thread Cylinder-bed Interlock Machine
 橫筒型三針五線雙面飾綳縫機(附上送裝置)



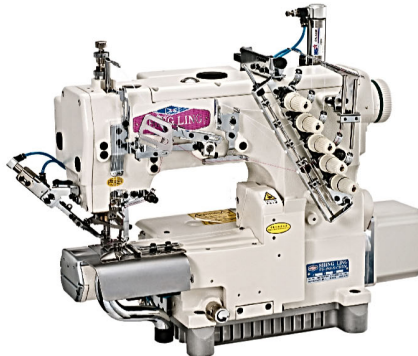
VG-999S-N700-AST-TF-DS

Small Cylinder-bed Interlock Machine with Left hand Knife and Top Feeder for Hemming
 細筒型三針五線雙面飾綳縫機(附左修刀)



VG-888A-N600-TF/AST

Interlock Machine with Left-hand Knife and Thread Trimmer for Hemming
 橫筒型附左修刀雙面飾綳縫機



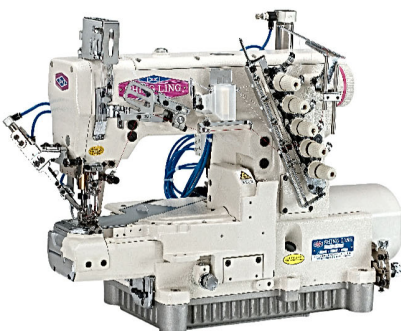
SL-1790S

Computer-controlled High-speed Lockstitch Buttonholing Machine
 高速電子平頭鎖眼機



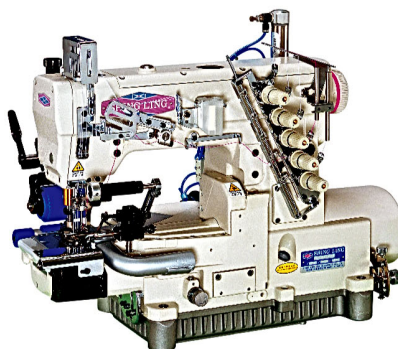
VG-999-SB-AST/EST-DS

High-speed Short Cylinder-bed Interlock Machine with Thread Trimmer
 短筒型三針五線雙面飾綳縫機



VG-999-R500-AST-RP

Interlock Machine with Right-hand Knife and Rear Puller for Elastic Waistband Attaching
 高速橫筒型三針五線附右修刀雙面飾綳縫機



VG-999-356/EST/DS/ZBR

Dual Colors Decorative Stitches Interlock Machine with Top and Under Thread Trimmer
 高速橫筒型三針五線雙色上飾綳縫機

